

# Health & Care Information Model:

## nl.zorg.MultidisciplinaryTeamMeeting-v3. 0

Status: Final

Release: 2026-1

Release status: Prepublished

Managed by:





# Content

<b>1. nl.zorg.MultidisciplinaryTeamMeeting-v3.0</b>	<b>4</b>
1.1 Revision History	4
1.2 Concept	4
1.3 Mindmap	4
1.4 Purpose	4
1.5 Patient Population	5
1.6 Evidence Base	5
1.7 Information Model	5
1.8 Example Instances	9
1.9 Instructions	10
1.10 Interpretation	10
1.11 Care Process	10
1.12 Example of the Instrument	10
1.13 Constraints	10
1.14 Issues	10
1.15 References	10
1.16 Functional Model	10
1.17 Traceability to other Standards	10
1.18 Disclaimer	10
1.19 Terms of Use	11
1.20 Copyrights	11

# 1. nl.zorg.MultidisciplinaryTeamMeeting-v3.0

DCM::CoderList	
DCM::ContactInformation.Address	*
DCM::ContactInformation.Name	*
DCM::ContactInformation.Telecom	*
DCM::ContentAuthorList	
DCM::CreationDate	10-04-2020
DCM::DeprecatedDate	
DCM::DescriptionLanguage	nl
DCM::EndorsingAuthority.Address	
DCM::EndorsingAuthority.Name	NFU
DCM::EndorsingAuthority.Telecom	
DCM::Id	2.16.840.1.113883.2.4.3.11.60.40.3.15.2
DCM::KeywordList	Patiëntbespreking, MDO
DCM::LifecycleStatus	Final
DCM::ModelerList	
DCM::Name	nl.zorg.Patientbespreking
DCM::PublicationDate	17-04-2026
DCM::PublicationStatus	Prepublished
DCM::ReviewerList	
DCM::RevisionDate	07-04-2025
DCM::Supersedes	nl.zorg.Patientbespreking-v2.0
DCM::Version	3.0
HCIM::PublicationLanguage	EN

## 1.1 Revision History

Publicatieversie 1.0 (01-09-2020)

Publicatieversie 1.1 (01-12-2021)  
Bevat: ZIB-1412, ZIB-1425, ZIB-1493, ZIB-1514.

Publicatieversie 1.1.1 (10-06-2022)  
Bevat: ZIB-1603.

Publicatieversie 2.0 (15-10-2023)  
Bevat: ZIB-1637

Publicatieversie 3.0 (24-04-2024)  
Bevat: ZIB-2620.

## 1.2 Concept

A multidisciplinary team meeting is a meeting of health care providers in which the results of examinations and treatment are discussed with the aim of formulating joint advice for the treatment of the patient. A patient can also be present. When healthcare professionals from various disciplines participate, and this is structurally organized (local, regional, sub regional or through a partnership), this is often referred to as a multidisciplinary consultation.

## 1.3 Mindmap

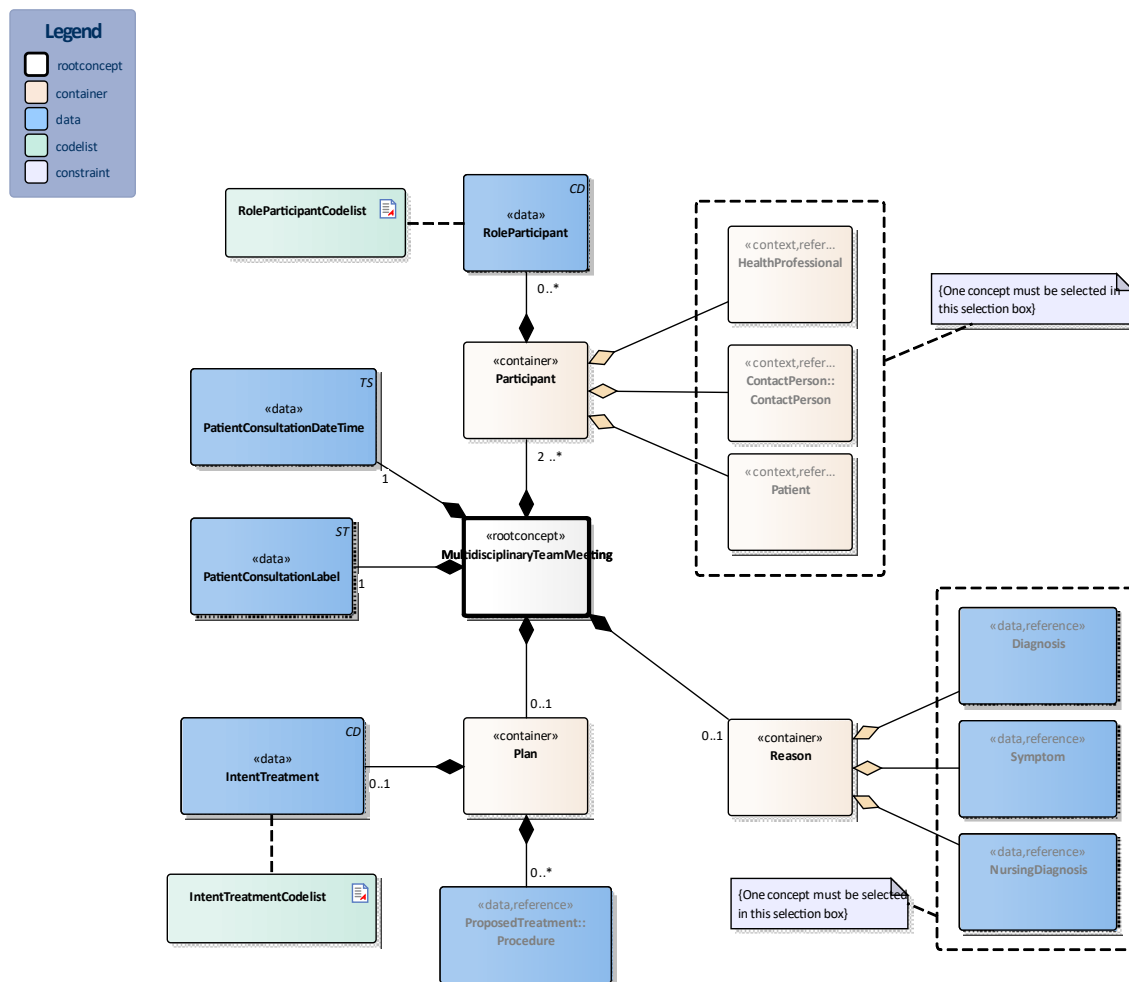
## 1.4 Purpose

The aim of the multidisciplinary team meeting is to evaluate the health status of the patient and to align subsequent policy for optimal treatment with care providers of all disciplines relevant for the patient's (nursing) diagnosis or symptom. Participants use results of diagnostic procedures and treatment as well as the latest (scientific) insights for the treatment of the patient's health status.

## 1.5 Patient Population

## 1.6 Evidence Base

## 1.7 Information Model



«rootconcept»	MultidisciplinaryTeamMeeting	
Definitie	Root concept of the MultidisciplinaryTeamMeeting information model. This root concept contains all data elements of the MultidisciplinaryTeamMeeting information model.	
Datatype		
DCM::ConceptId	NL-CM:15.2.1	

<b>DCM::DefinitionCode</b>	SNOMED CT: 384682003 Multidisciplinary care conference	
<b>Opties</b>		

<b>«data»</b>	<b>PatientConsultationLabel</b>	
<b>Definitie</b>	The name used to identify the particular patient consultation, e.g. MDC head and neck cancer.	
<b>Datatype</b>	ST	
<b>DCM::ConceptId</b>	NL-CM:15.2.5	
<b>Opties</b>		

<b>«data»</b>	<b>PatientConsultationDateTime</b>	
<b>Definitie</b>	The date (and time) the patient consultation is scheduled or took place.	
<b>Datatype</b>	TS	
<b>DCM::ConceptId</b>	NL-CM:15.2.6	
<b>DCM::DefinitionCode</b>	SNOMED CT: 439771001 Date of event	
<b>Opties</b>		

<b>«container»</b>	<b>Participant</b>	
<b>Definitie</b>	Container of the Participant concept. This container contains all data elements of the Participant concept.	
<b>Datatype</b>		
<b>DCM::ConceptId</b>	NL-CM:15.2.13	
<b>Opties</b>		

<b>«data»</b>	<b>RoleParticipant</b>	
<b>Definitie</b>	Role of the person in the patient meeting, for example chairman, expert, notifier, secretary.	
<b>Datatype</b>	CD	
<b>DCM::ConceptId</b>	NL-CM:15.2.14	
<b>DCM::ValueSet</b>	RoleParticipantCodelist	OID: 2.16.840.1.113883.2.4.3.11.60.40.2.15.2.2
<b>Opties</b>		

<b>«context»</b>	<b>HealthProfessional</b>	
<b>Definitie</b>	Health professional as participant of the patient consultation.	
<b>Datatype</b>		
<b>DCM::ConceptId</b>	NL-CM:15.2.3	
<b>DCM::ExampleValue</b>	Klinisch geneticus	
<b>DCM::ReferencedConceptId</b>	NL-CM:17.1.1	This is a reference to the rootconcept of information model HealthProfessional.
<b>Opties</b>		

<b>«context»</b>	<b>ContactPerson::ContactPerson</b>	
<b>Definitie</b>	Contact person as participant of the patient consultation.	
<b>Datatype</b>		
<b>DCM::ConceptId</b>	NL-CM:15.2.15	
<b>DCM::ReferencedConceptId</b>	NL-CM:3.1.1	This is a reference to the rootconcept of information model ContactPerson.
<b>Opties</b>		

<b>«context»</b>	<b>Patient</b>	
------------------	----------------	--

<b>Definitie</b>	The patient as participant of the patient consultation.	
<b>Datatype</b>		
<b>DCM::ConceptId</b>	NL-CM:15.2.16	
<b>DCM::ReferencedConceptId</b>	NL-CM:0.1.1	This is a reference to the rootconcept of information model Patient.
<b>Opties</b>		

<b>«container»</b>	<b>Reason</b>	
<b>Definitie</b>	Container of the Reason concept.This container contains all data elements of the Reason concept.	
<b>Datatype</b>		
<b>DCM::ConceptId</b>	NL-CM:15.2.17	
<b>Opties</b>		

<b>«data»</b>	<b>Diagnosis</b>	
<b>Definitie</b>	The diagnosis that gives rise to discussing the patient in the multidisciplinary team meeting.	
<b>Datatype</b>		
<b>DCM::ConceptId</b>	NL-CM:15.2.18	
<b>DCM::ReferencedConceptId</b>	NL-CM:5.6.1	This is a reference to the rootconcept of information model Diagnosis.
<b>Opties</b>		

<b>«data»</b>	<b>Symptom</b>	
<b>Definitie</b>	The symptom that gives rise to discussing the patient in the multidisciplinary team meeting.	
<b>Datatype</b>		
<b>DCM::ConceptId</b>	NL-CM:15.2.19	
<b>DCM::ReferencedConceptId</b>	NL-CM:5.5.1	This is a reference to the rootconcept of information model Symptom.
<b>Opties</b>		

<b>«data»</b>	<b>NursingDiagnosis</b>	
<b>Definitie</b>	The nursing diagnosis that gives rise to discussing the patient in the multidisciplinary team meeting.	
<b>Datatype</b>		
<b>DCM::ConceptId</b>	NL-CM:15.2.20	
<b>DCM::ReferencedConceptId</b>	NL-CM:5.8.1	This is a reference to the rootconcept of information model NursingDiagnosis.
<b>Opties</b>		

<b>«container»</b>	<b>Plan</b>	
<b>Definitie</b>	Container of the Plan concept. This container contains all data elements of the Plan concept.	
<b>Datatype</b>		
<b>DCM::ConceptId</b>	NL-CM:15.2.10	
<b>DCM::DefinitionCode</b>	SNOMED CT: 160841000146102 Section for treatment recommendation decided in multidisciplinary care meeting	
<b>Opties</b>		

«data»	ProposedTreatment::Procedure	
Definitie	Proposed treatment.	
Datatype		
DCM::ConceptId	NL-CM:15.2.12	
DCM::ReferencedConceptId	NL-CM:14.1.1	This is a reference to the rootconcept of information model Procedure.
Opties		

«data»	IntentTreatment	
Definitie	Intent of treatment. For instance conform protocol, curative or pain management, trial etc.	
Datatype	CD	
DCM::ConceptId	NL-CM:15.2.11	
DCM::DefinitionCode	SNOMED CT: 395077000 Treatment intent	
DCM::ExampleValue	true	
DCM::ValueSet	IntentTreatmentCodelist	OID: 2.16.840.1.113883.2.4.3.11.60.40.2.15.2.1
Opties		

«document»	IntentTreatmentCodelist	
Definitie		
Datatype		
DCM::ValueSetBinding	Extensible	
DCM::ValueSetId	2.16.840.1.113883.2.4.3.11.60.40.2.15.2.1	
DCM::ValueSetIncludeOTH	True	
DCM::ValueSetStatus	Active	
HCIM::ValueSetLanguage	--	
Opties		

IntentieBehandelingCodelijst			OID: 2.16.840.1.113883.2.4.3.11.60.40.2.15.2.1	
Concept Name	Concept Code	Coding Syst. Name	Coding System OID	Description
Following clinical pathway protocol	370858005	SNOMED CT	2.16.840.1.113883.6.96	Behandeling conform richtlijn
Curative procedure intent	373808002	SNOMED CT	2.16.840.1.113883.6.96	Curatieve behandeling
Palliative care	103735009	SNOMED CT	2.16.840.1.113883.6.96	Palliatieve zorg
Assessment of eligibility for clinical trial	450332002	SNOMED CT	2.16.840.1.113883.6.96	Toetsing van inclusiecriteria voor clinical trial

«document»	RoleParticipantCodelist	
Definitie		
Datatype		
DCM::ValueSetBinding	Extensible	
DCM::ValueSetId	2.16.840.1.113883.2.4.3.11.60.40.2.15.2.2	
DCM::ValueSetIncludeOTH	True	
DCM::ValueSetStatus	Active	



HCIM::ValueSetLanguage		NL	
Opties			
RolDeelnemerCodelijst			OID: 2.16.840.1.113883.2.4.3.11.60.40.2.15.2.2
Concept Name	Concept Code	Coding Syst. Name	Description
voorzitter	VOORZ	RolBespreking	Voorzitter van de patiëntbespreking
aanmelder	AANM	RolBespreking	Aanmelder van de patiënt bij de bespreking
expert	EXPR	RolBespreking	Inhoudelijk expert bij de bespreking

	Legend
Definitie	
Datatype	
Opties	

	Constraint
Definitie	One concept must be selected in this selection box
Datatype	
Opties	

	Constraint
Definitie	One concept must be selected in this selection box
Datatype	
Opties	

## 1.8 Example Instances

PatientBespreeking				
Label				
Expertpanel MDO colorectaal				
Deelnemers				
Naam	Specialisme	Zorgaanbieder	Contactgegevens	DeelnemerRol
W. Klaasen	Verpleegkundige	MUMC+	043-8547930	Casemanager
Drs. S. Curie	Radioloog	MUMC+	043-9263795	Expert
Dr. R. van Heck	Internist-oncoloog	MUMC+	043-5388393	Voorzitter
Dr. J. Willems	Chirurg-oncoloog	Laurentius zkh	0475-645398	Aanmelder
Dr. de Groot	Lever-chirurg	MMC	040-5921909	Expert
Dr. Stevens	Lever-chirurg	MUMC+	043-8748887	Expert
Patient en/of contactpersoon				
Dhr. Pieterse			0475 - 228844	
Mw. Pieterse-de Groot			06 - 11114444	
Patient Bespreking DatumTijd	Patient	Aanleiding		
		Diagnose		
25-06-2020 10:15 – 10:30	Dhr. Pieterse	781382000  Malignant neoplasm of colon and/or rectum		
Beleid				
Intentie Behandeling				
Curatief				
VoorgesteldeBehandeling::Verrichting				
VerrichtingType	Datum	UitgevoerdDoor		Locatie
Partiële leverresectie	09-2020	Dr. Stevens		MUMC+

## 1.9 Instructions

## 1.10 Interpretation

## 1.11 Care Process

## 1.12 Example of the Instrument

## 1.13 Constraints

## 1.14 Issues

## 1.15 References

volgt n

## 1.16 Functional Model

## 1.17 Traceability to other Standards

## 1.18 Disclaimer

The Health and Care Information Models (a.k.a Clinical Building Block) has been made in collaboration with several different parties in healthcare. These parties asked Nictiz to manage good maintenance and development of the information models. Hereafter, these parties and Nictiz are referred to as the collaborating parties. The collaborating parties paid utmost attention to the reliability and topicality of the data in these Health and Care Information Models. Omissions and inaccuracies may however occur. The collaborating parties are not liable for any damages resulting from omissions or inaccuracies in the information provided, nor are they liable for damages resulting from problems caused by or inherent to distributing information on the internet, such as malfunctions, interruptions, errors or delays in information or services provide by the parties to you or by you to the parties via a website or via e-mail, or any other digital means. The collaborating parties will also not accept liability for any damages resulting from the use of data, advice or ideas provided by or on behalf of the parties by means of the Health and Care Information Models. The parties will not accept any liability for the content of information in this Health and Care Information Model to which or from which a hyperlink is referred. In the event of contradictions in mentioned Health and Care Information Model documents and files, the most recent and highest version of the listed order in the revisions will indicate the priority of the documents in question. If information included in the digital version of a Health and Care Information Model is also distributed in writing, the written version will be leading in case of textual differences. This will apply if both have the same version number and date. A definitive version has priority over a draft version. A revised version has priority over previous versions.

## **1.19 Terms of Use**

The user may use the Health and Care Information Models without limitations. The copyright provisions in the paragraph concerned apply to copying, distributing and passing on the Health and Care Information Models.

## **1.20 Copyrights**

A Health and Care Information Model qualifies as a work within the meaning of Section 10 of the Copyright Act (Auteurswet). Copyrights protect the Health and Care Information Models and these rights are owned by the cooperating parties.

The user may copy, distribute and pass on the information in this Health and Care Information Model under the conditions that apply for Creative Commons license Attribution-NonCommercial-ShareAlike 3.0 Netherlands (CC BY-NC-SA-3.0).

The content is available under Creative Commons Attribution-NonCommercial-ShareAlike 3.0 (see also <http://creativecommons.org/licenses/by-nc-sa/3.0/nl/>)

This does not apply to information from third parties that sometimes is used and / or referred to in a Health and Care Information Model, for example to an international medical terminology system. Any (copyright) rights that protect this information are not owned by the cooperating parties but by those third parties.

Nictiz is the independent national competence centre for electronic exchange of health and care information. The activities of Nictiz include the targeted development and management of information standards at the request of and in partnership with the stakeholders in healthcare. Nictiz advises these parties on all aspects of information exchange and identifies (future) national and international developments.

**Nictiz**

P.O. Box 19121  
2500 CC Den Haag  
Oude Middenweg 55  
2491 AC Den Haag

070-3173450  
[info@nictiz.nl](mailto:info@nictiz.nl)  
[www.nictiz.nl](http://www.nictiz.nl)



