

# Health & Care Information Model:

nl.zorg.NutritionAdvice-v4.0

Status: Final

Release: 2026-1

Release status: Prepublished

Managed by:



# Content

<b>1. nl.zorg.NutritionAdvice-v4.0</b>	<b>3</b>
1.1 Revision History	3
1.2 Concept	3
1.3 Mindmap	3
1.4 Purpose	4
1.5 Patient Population	4
1.6 Evidence Base	4
1.7 Information Model	4
1.8 Example Instances	6
1.9 Instructions	6
1.10 Interpretation	7
1.11 Care Process	7
1.12 Example of the Instrument	7
1.13 Constraints	7
1.14 Issues	7
1.15 References	7
1.16 Functional Model	7
1.17 Traceability to other Standards	7
1.18 Disclaimer	7
1.19 Terms of Use	7
1.20 Copyrights	8

# 1. nl.zorg.NutritionAdvice-v4.0

DCM::CoderList	Werkgroep RadB Verpleegkundige Gegevens
DCM::ContactInformation.Address	*
DCM::ContactInformation.Name	*
DCM::ContactInformation.Telecom	*
DCM::ContentAuthorList	Werkgroep RadB Verpleegkundige Gegevens
DCM::CreationDate	12-2-2014
DCM::DeprecatedDate	
DCM::DescriptionLanguage	nl
DCM::EndorsingAuthority.Address	
DCM::EndorsingAuthority.Name	PM
DCM::EndorsingAuthority.Telecom	
DCM::Id	2.16.840.1.113883.2.4.3.11.60.40.3.7.11
DCM::KeywordList	Voedingsadvies, dieet, consistentie
DCM::LifecycleStatus	Final
DCM::ModelerList	Werkgroep RadB Verpleegkundige Gegevens
DCM::Name	nl.zorg.Voedingsadvies
DCM::PublicationDate	17-04-2026
DCM::PublicationStatus	Prepublished
DCM::ReviewerList	Projectgroep RadB Verpleegkundige Gegevens & Kerngroep Registratie aan de Bron
DCM::RevisionDate	07-04-2025
DCM::Supersedes	nl.zorg.Voedingsadvies-v3.2.1
DCM::Version	4.0
HCIM::PublicationLanguage	EN

## 1.1 Revision History

Publicatieversie 1.0 (01-07-2015)

Publicatieversie 3.0 (01-05-2016)

Bevat: ZIB-453.

Publicatieversie 3.1 (04-09-2017)

Bevat: ZIB-530, ZIB-549, ZIB-569.

Publicatieversie 3.2 (06-07-2019)

Bevat: ZIB-707.

Publicatieversie 3.2.1 (15-10-2023)

Bevat: ZIB-1974.

Publicatieversie 4.0 (24-04-2024)

Bevat: ZIB-2609.

## 1.2 Concept

A nutritional advice is a description of nourishment for the patient, which must meet specific requirements in view of the health condition of the patient. Allergies and food intolerances or chewing and swallowing problems may be a reason for special nutrition.

## 1.3 Mindmap

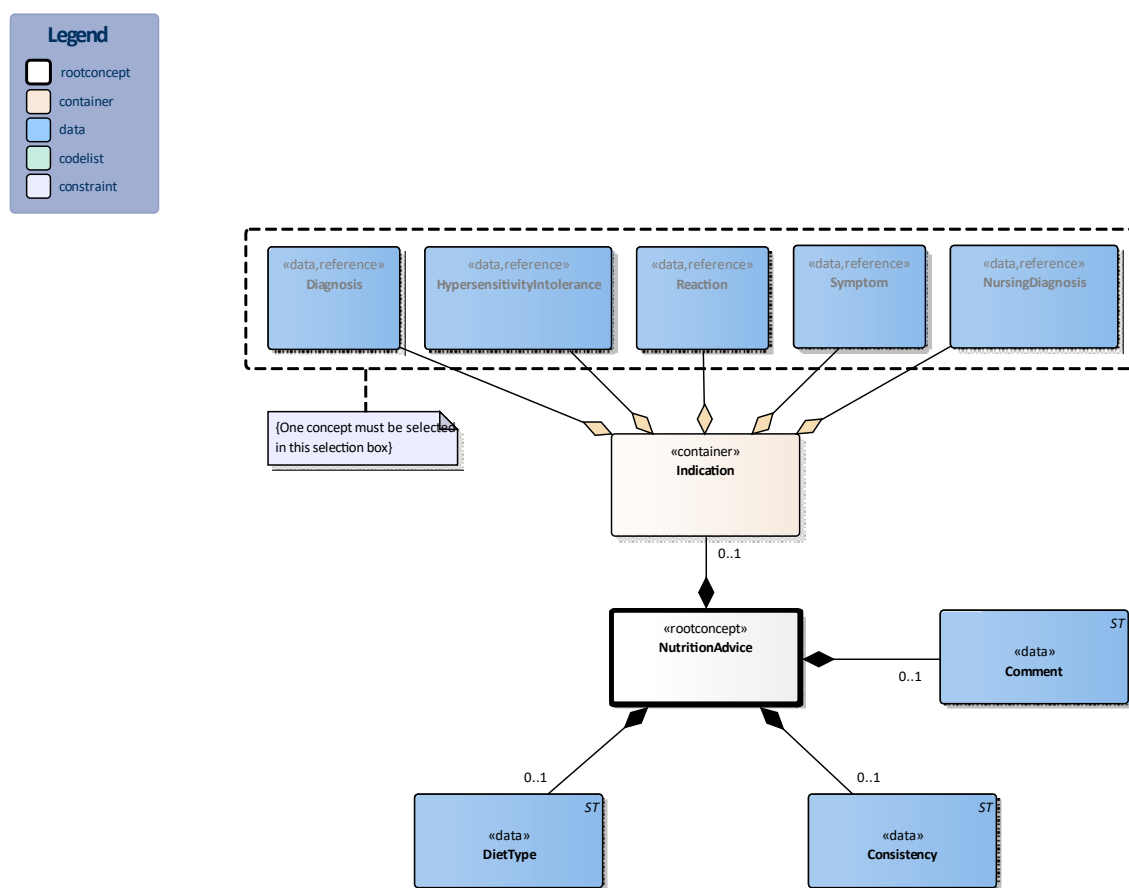
## 1.4 Purpose

Recording and communicating nutrition advice provides insight in policy regarding the patient's diet. If this information is not available, it can lead to unsafe situations for the patient. Especially in transfer cases, it is important for nutrition advices to be clearly communicated.

## 1.5 Patient Population

## 1.6 Evidence Base

## 1.7 Information Model



«rootconcept»	NutritionAdvice	
Definitie	Root concept of the NutritionAdvice information model. This concept contains all data elements of the NutritionAdvice information model.	
Datatype		
DCM::ConceptId	NL-CM:7.11.1	
DCM::DefinitionCode	SNOMED CT: 11816003	
	Dietary advice	
Opties		

«container»	Indication	
Definitie	Container of the Indication concept.This container contains all data elements of the Indication concept.	
Datatype		
DCM::ConceptId	NL-CM:7.11.5	
Opties		

«data»	Diagnosis	
Definitie	The diagnosis that serves as an indication for this nutritional advice.	
Datatype		
DCM::ConceptId	NL-CM:7.11.6	
DCM::ReferencedConceptId	NL-CM:5.6.1	This is a reference to the rootconcept of information model Diagnosis.
Opties		

«data»	HypersensitivityIntolerance	
Definitie	The hypersensitivity or intolerance that serves as an indication for this nutritional advice.	
Datatype		
DCM::ConceptId	NL-CM:7.11.7	
DCM::ReferencedConceptId	NL-CM:8.6.1	This is a reference to the rootconcept of information model HypersensitivityIntolerance.
Opties		

«data»	Reaction	
Definitie	The reaction that serves as an indication for this nutritional advice.	
Datatype		
DCM::ConceptId	NL-CM:7.11.8	
DCM::ReferencedConceptId	NL-CM:5.3.1	This is a reference to the rootconcept of information model Reaction.
Opties		

«data»	Symptom	
Definitie	The symptom that serves as an indication for this nutritional advice.	
Datatype		
DCM::ConceptId	NL-CM:7.11.9	
DCM::ReferencedConceptId	NL-CM:5.5.1	This is a reference to the rootconcept of information model Symptom.
Opties		

«data»	NursingDiagnosis	
Definitie	The nursing diagnosis that serves as an indication for this nutritional advice.	
Datatype		
DCM::ConceptId	NL-CM:7.11.10	
DCM::ReferencedConceptId	NL-CM:5.8.1	This is a reference to the rootconcept of information model NursingDiagnosis.
Opties		

«data»	Consistency	
Definitie	A description of the consistency of the food.	
Datatype	ST	
DCM::ConceptId	NL-CM:7.11.3	

DCM::DefinitionCode	SNOMED CT: 229961002 Food consistency types	
DCM::ExampleValue	Dikvloeibaar	
Opties		

«data»	DietType	
Definitie	Description of the type of diet.	
Datatype	ST	
DCM::ConceptId	NL-CM:7.11.2	
DCM::DefinitionCode	SNOMED CT: 41829006 Dietary finding	
DCM::ExampleValue	Natriumbeperkt	
Opties		

«data»	Comment	
Definitie	A comment on the nutrition advice.	
Datatype	ST	
DCM::ConceptId	NL-CM:7.11.4	
DCM::DefinitionCode	LOINC: 48767-8 Annotation comment	
DCM::ExampleValue	Datum verandering dieet in natriumbeperkt	
Opties		

	Legend	
Definitie		
Datatype		
Opties		

	Constraint	
Definitie	One concept must be selected in this selection box	
Datatype		
Opties		

## 1.8 Example Instances

Voedingsadvies	
DieetType	Energie verrijkt
Consistentie	Dikvloeibaar
Toelichting	Sinds een week dieet veranderd in energieverrijkt.
Indicatie	
VerpleegkundigeDiagnose	Moeite met slikken

## 1.9 Instructions

## **1.10 Interpretation**

## **1.11 Care Process**

## **1.12 Example of the Instrument**

## **1.13 Constraints**

## **1.14 Issues**

## **1.15 References**

## **1.16 Functional Model**

## **1.17 Traceability to other Standards**

## **1.18 Disclaimer**

The Health and Care Information Models (a.k.a Clinical Building Block) has been made in collaboration with several different parties in healthcare. These parties asked Nictiz to manage good maintenance and development of the information models. Hereafter, these parties and Nictiz are referred to as the collaborating parties. The collaborating parties paid utmost attention to the reliability and topicality of the data in these Health and Care Information Models. Omissions and inaccuracies may however occur. The collaborating parties are not liable for any damages resulting from omissions or inaccuracies in the information provided, nor are they liable for damages resulting from problems caused by or inherent to distributing information on the internet, such as malfunctions, interruptions, errors or delays in information or services provide by the parties to you or by you to the parties via a website or via e-mail, or any other digital means. The collaborating parties will also not accept liability for any damages resulting from the use of data, advice or ideas provided by or on behalf of the parties by means of the Health and Care Information Models. The parties will not accept any liability for the content of information in this Health and Care Information Model to which or from which a hyperlink is referred. In the event of contradictions in mentioned Health and Care Information Model documents and files, the most recent and highest version of the listed order in the revisions will indicate the priority of the documents in question. If information included in the digital version of a Health and Care Information Model is also distributed in writing, the written version will be leading in case of textual differences. This will apply if both have the same version number and date. A definitive version has priority over a draft version. A revised version has priority over previous versions.

## **1.19 Terms of Use**

The user may use the Health and Care Information Models without limitations. The copyright provisions in the paragraph concerned apply to copying, distributing and passing on the Health and Care Information Models.

## 1.20 Copyrights

A Health and Care Information Model qualifies as a work within the meaning of Section 10 of the Copyright Act (Auteurswet). Copyrights protect the Health and Care Information Model and these rights are owned by the cooperating parties.

The user may copy, distribute and pass on the information in this Health and Care Information Model under the conditions that apply for Creative Commons license Attribution-NonCommercial-ShareAlike 3.0 Netherlands (CC BY-NC-SA-3.0).

The content is available under Creative Commons Attribution-NonCommercial-ShareAlike 3.0 (see also <http://creativecommons.org/licenses/by-nc-sa/3.0/nl/>)

This does not apply to information from third parties that sometimes is used and / or referred to in a Health and Care Information Model, for example to an international medical terminology system. Any (copyright) rights that protect this information are not owned by the cooperating parties but by those third parties.



Nictiz is the independent national competence centre for electronic exchange of health and care information. The activities of Nictiz include the targeted development and management of information standards at the request of and in partnership with the stakeholders in healthcare. Nictiz advises these parties on all aspects of information exchange and identifies (future) national and international developments.

**Nictiz**

P.O. Box 19121  
2500 CC Den Haag  
Oude Middenweg 55  
2491 AC Den Haag

070-3173450  
[info@nictiz.nl](mailto:info@nictiz.nl)  
[www.nictiz.nl](http://www.nictiz.nl)



