

# Health & Care Information Model:

nl.zorg.SNAQScore-v3.3

Status: Final

Release: 2026-1

Release status: Prepublished

Managed by:



# Content

<b>1. nl.zorg.SNAQScore-v3.3</b>	<b>3</b>
1.1 Revision History	3
1.2 Concept	3
1.3 Mindmap	4
1.4 Purpose	4
1.5 Patient Population	4
1.6 Evidence Base	4
1.7 Information Model	4
1.8 Example Instances	7
1.9 Instructions	8
1.10 Interpretation	8
1.11 Care Process	8
1.12 Example of the Instrument	8
1.13 Constraints	8
1.14 Issues	8
1.15 References	8
1.16 Functional Model	8
1.17 Traceability to other Standards	8
1.18 Disclaimer	8
1.19 Terms of Use	9
1.20 Copyrights	9

## 1. nl.zorg.SNAQScore-v3.3

DCM::CoderList	Werkgroep RadB Verpleegkundige Gegevens
DCM::ContactInformation.Address	*
DCM::ContactInformation.Name	*
DCM::ContactInformation.Telecom	*
DCM::ContentAuthorList	Werkgroep RadB Verpleegkundige Gegevens
DCM::CreationDate	12-2-2014
DCM::DeprecatedDate	
DCM::DescriptionLanguage	nl
DCM::EndorsingAuthority.Address	
DCM::EndorsingAuthority.Name	zorg
DCM::EndorsingAuthority.Telecom	
DCM::Id	2.16.840.1.113883.2.4.3.11.60.40.3.4.6
DCM::KeywordList	Ondervoeding, ondervoedingsscore, SNAQ, malnutrition
DCM::LifecycleStatus	Final
DCM::ModelerList	Werkgroep RadB Verpleegkundige Gegevens
DCM::Name	nl.zorg.SNAQScore
DCM::PublicationDate	17-04-2026
DCM::PublicationStatus	Prepublished
DCM::ReviewerList	Projectgroep RadB Verpleegkundige Gegevens & Kerngroep Registratie aan de Bron
DCM::RevisionDate	08-09-2023
DCM::Supersedes	nl.zorg.SNAQScore-v3.2.1
DCM::Version	3.3
HCIM::PublicationLanguage	EN

### 1.1 Revision History

Publicatieversie 1.0 (01-07-2015)

Publicatieversie 3.0 (01-05-2016)

Bevat: ZIB-453.

Publicatieversie 3.1 (04-09-2017)

Bevat: ZIB-523.

Publicatieversie 3.2 (31-01-2020)

Bevat: ZIB-931.

Publicatieversie 3.2.1 (10-06-2022)

Bevat: ZIB-1633.

Publicatieversie 3.3 (15-10-2023)

Bevat: ZIB-1729.

### 1.2 Concept

The Short Nutritional Assessment Questionnaire (SNAQ) is a (validated) measuring tool for determining the extent of a patient's malnutrition. The tool comprises three questions, each of which is assigned a score. The total score determines the extent of malnutrition.

The SNAQ helps to recognize and treat malnutrition at an early stage.

Three varieties of the measuring tool were developed for different care settings: hospitals, nursing and retirement homes and independently living seniors. This concept describes the tool intended for the hospital setting.

## 1.3 Mindmap

## 1.4 Purpose

The SNAQ score is used to determine the extent of malnutrition or the risk of malnutrition. To treat malnutrition quickly and effectively, it is important to identify the malnutrition at an early stage.

## 1.5 Patient Population

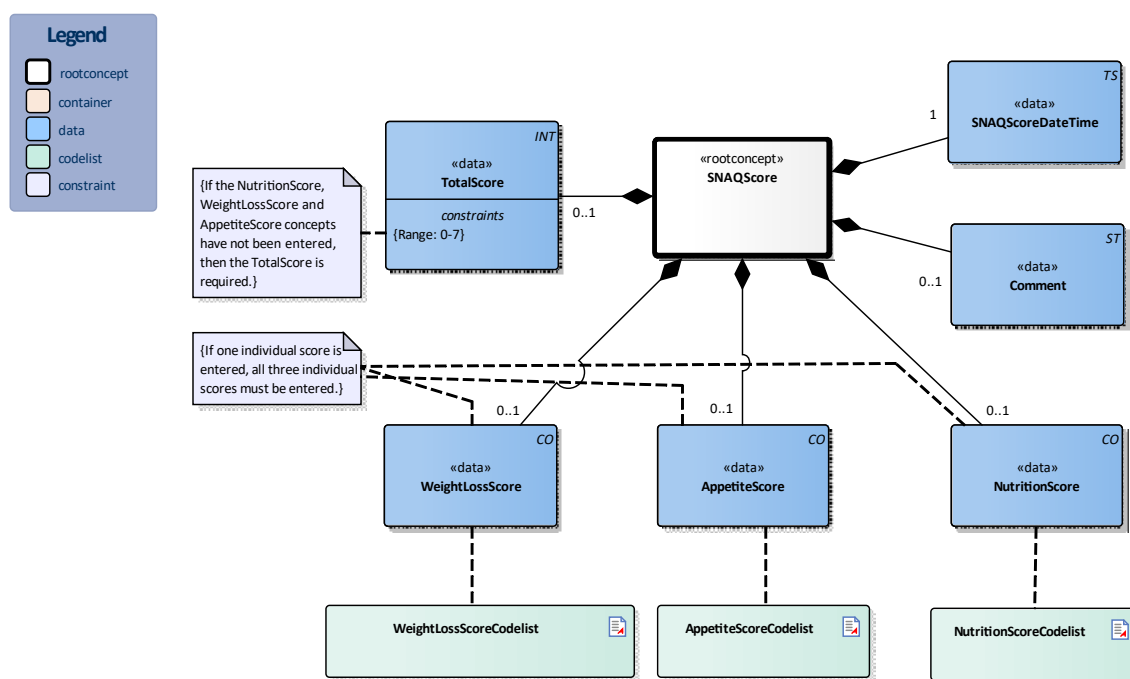
The SNAQ is meant for patients over 18 years of age who are staying at the hospital.

## 1.6 Evidence Base

To determine the extent of malnutrition, SNAQ has a number of tools, validated for different settings:

- The SNAQ was developed for adults admitted to hospital
- The SNAQ65+ was developed for the group of seniors (age over 65) who live at home and who may make use of care at home.
- The SNAQrc (Short Nutritional Assessment Questionnaire for Residential Care) is available for screening for malnutrition in nursing and retirement homes.
- The STRONGkids tool is available for screening for malnutrition among children.

## 1.7 Information Model



«rootconcept»	SNAQScore	
Definitie	Root concept of the SNAQScore information model. This root concept contains all data elements of the SNAQScore information model.	
Datatype		
DCM::ConceptId	NL-CM:4.6.1	

DCM::DefinitionCode	SNOMED CT: 8881000146104 Short Nutritional Assessment Questionnaire	
Opties		

«data»	WeightLossScore	
Definitie	The score based on undesired weight loss over the past month(s).	
Datatype	CO	
DCM::ConceptId	NL-CM:4.6.3	
DCM::DefinitionCode	ScoreObservaties: 4006003 SNAQScore WeightLossScore	OID: 2.16.840.1.113883.2.4.3.11.60.40.4.0.1
DCM::ValueSet	WeightLossScoreCodelist	OID: 2.16.840.1.113883.2.4.3.11.60.40.2.4.6.1
Opties		

«data»	AppetiteScore	
Definitie	The score based on a reduced appetite over the past month.	
Datatype	CO	
DCM::ConceptId	NL-CM:4.6.4	
DCM::DefinitionCode	ScoreObservaties: 4006004 SNAQScore AppetiteScore	OID: 2.16.840.1.113883.2.4.3.11.60.40.4.0.1
DCM::ValueSet	AppetiteScoreCodelist	OID: 2.16.840.1.113883.2.4.3.11.60.40.2.4.6.2
Opties		

«data»	NutritionScore	
Definitie	The score based on the use of fluid or enteral nutrition over the past month.	
Datatype	CO	
DCM::ConceptId	NL-CM:4.6.5	
DCM::DefinitionCode	ScoreObservaties: 4006005 SNAQScore NutritionScore	OID: 2.16.840.1.113883.2.4.3.11.60.40.4.0.1
DCM::ValueSet	NutritionScoreCodelist	OID: 2.16.840.1.113883.2.4.3.11.60.40.2.4.6.3
Opties		

«data»	TotalScore	
Definitie	The total score is the sum of all the individual scores. The total score has a range from 0 - 7.	
Datatype	INT	
DCM::ConceptId	NL-CM:4.6.2	
DCM::DefinitionCode	SNOMED CT: 108911000146107 Short Nutritional Questionnaire total score	
Opties		
Constraint	Range: 0-7	

«data»	SNAQScoreDateTime	
Definitie	The date and time at which the SNAQ score was determined.	
Datatype	TS	
DCM::ConceptId	NL-CM:4.6.6	
Opties		

«data»	Comment	
Definitie	A comment on the circumstances during the measurement.	
Datatype	ST	
DCM::ConceptId	NL-CM:4.6.7	
DCM::DefinitionCode	LOINC: 48767-8 Annotation comment	
Opties		

«document»	WeightLossScoreCodelist	
Definitie		
Datatype		
DCM::ValueSetBinding	Required	
DCM::ValueSetId	2.16.840.1.113883.2.4.3.11.60.40.2.4.6.1	
DCM::ValueSetIncludeOTH	False	
DCM::ValueSetStatus	Active	
HCIM::ValueSetLanguage	EN	
Opties		

GewichtsverliesScoreCodelijst				OID: 2.16.840.1.113883.2.4.3.11.60.40.2.4.6.1	
Concept Name	Concept Code	Concept Value	Coding Syst. Name	Coding System OID	Description
LossLow	G0	0	SNAQ_Gewichtsverlies	2.16.840.1.113883.2.4.3.11.60.40.4.5.1	Geen gewichtverlies
LossAverage	G1	2	SNAQ_Gewichtsverlies	2.16.840.1.113883.2.4.3.11.60.40.4.5.1	Meer dan 3 kg in de laatste maand
LossHigh	G2	3	SNAQ_Gewichtsverlies	2.16.840.1.113883.2.4.3.11.60.40.4.5.1	Meer dan 6 kg in de laatste 6 maanden
LossBothAverageAndHigh	G3	5	SNAQ_Gewichtsverlies	2.16.840.1.113883.2.4.3.11.60.40.4.5.1	Meer dan 3 kg in de laatste maand EN meer dan 6 kg in de laatste 6 maanden.

«document»	AppetiteScoreCodelist	
Definitie		
Datatype		
DCM::ValueSetBinding	Required	
DCM::ValueSetId	2.16.840.1.113883.2.4.3.11.60.40.2.4.6.2	
DCM::ValueSetIncludeOTH	False	
DCM::ValueSetStatus	Active	
HCIM::ValueSetLanguage	NL	
Opties		

EetlustScoreCodelijst			OID: 2.16.840.1.113883.2.4.3.11.60.40.2.4.6.2		
Concept Name	Concept Value	Concept Code	CodeSys. Name	CodeSystem OID	Description
Eetlust	0	B0	SNAQ_Eetlust	2.16.840.1.113883.2.4.3.11.60.40.4.5.2	Normale eetlust
GeenEetlust	1	B1	SNAQ_Eetlust	2.16.840.1.113883.2.4.3.11.60.40.4.5.2	Verminderde eetlust de afgelopen maand

«document»	NutritionScoreCodelist	
Definitie		
Datatype		
DCM::ValueSetBinding	Required	
DCM::ValueSetId	2.16.840.1.113883.2.4.3.11.60.40.2.4.6.3	
DCM::ValueSetInclude OTH	False	
DCM::ValueSetStatus	Active	
HCIM::ValueSetLanguage	NL	
Opties		

VoedingsScoreCodelijst			OID: 2.16.840.1.113883.2.4.3.11.60.40.2.4.6.3		
Concept Name	Concept Value	Concept Code	CodeSys. Name	CodeSystem OID	Description
GeenVoeding	0	Z0	SNAQ_Voeding	2.16.840.1.113883.2.4.3.11.60.40.4.5.3	Geen drink- of sondevoeding
Voeding	1	Z1	SNAQ_Voeding	2.16.840.1.113883.2.4.3.11.60.40.4.5.3	Drink- of sondevoeding in de afgelopen maand

	Legend
Definitie	
Datatype	
Opties	

	Constraint
Definitie	If one individual score is entered, all three individual scores must be entered.
Datatype	
Opties	

	Constraint
Definitie	If the NutritionScore, WeightLossScore and AppetiteScore concepts have not been entered, then the TotalScore is required.
Datatype	
Opties	

## 1.8 Example Instances

SNAQScore	
SNAQScoreDatumTijd	27-01-2013
GewichtsverliesScore	3 (Meer dan 6 kg in de laatste 6 maanden)
EetlustScore	1 (Verminderde eetlust de afgelopen maand)
VoedingsScore	0 (Geen drink- of sondevoeding)
TotaalScore	4
Toelichting	-

## 1.9 Instructions

### 1.10 Interpretation

### 1.11 Care Process

### 1.12 Example of the Instrument

### 1.13 Constraints

### 1.14 Issues

### 1.15 References

1. Stuurgroep Ondervoeding [Online] Beschikbaar op: <http://www.stuurgroepondervoeding.nl/>  
[Geraadpleegd: 13 februari 2015]

### 1.16 Functional Model

### 1.17 Traceability to other Standards

### 1.18 Disclaimer

The Health and Care Information Models (a.k.a Clinical Building Block) has been made in collaboration with several different parties in healthcare. These parties asked Nictiz to manage good maintenance and development of the information models. Hereafter, these parties and Nictiz are referred to as the collaborating parties. The collaborating parties paid utmost attention to the reliability and topicality of the data in these Health and Care Information Models. Omissions and inaccuracies may however occur. The collaborating parties are not liable for any damages resulting from omissions or inaccuracies in the information provided, nor are they liable for damages resulting from problems caused by or inherent to distributing information on the internet, such as malfunctions, interruptions, errors or delays in information or services provide by the parties to you or by you to the parties via a website or via e-mail, or any other



digital means. The collaborating parties will also not accept liability for any damages resulting from the use of data, advice or ideas provided by or on behalf of the parties by means of the Health and Care Information Models. The parties will not accept any liability for the content of information in this Health and Care Information Model to which or from which a hyperlink is referred. In the event of contradictions in mentioned Health and Care Information Model documents and files, the most recent and highest version of the listed order in the revisions will indicate the priority of the documents in question. If information included in the digital version of a Health and Care Information Model is also distributed in writing, the written version will be leading in case of textual differences. This will apply if both have the same version number and date. A definitive version has priority over a draft version. A revised version has priority over previous versions.

## **1.19 Terms of Use**

The user may use the Health and Care Information Models without limitations. The copyright provisions in the paragraph concerned apply to copying, distributing and passing on the Health and Care Information Models.

## **1.20 Copyrights**

A Health and Care Information Model qualifies as a work within the meaning of Section 10 of the Copyright Act (Auteurswet). Copyrights protect the Health and Care Information Models and these rights are owned by the cooperating parties.

The user may copy, distribute and pass on the information in this Health and Care Information Model under the conditions that apply for Creative Commons license Attribution-NonCommercial-ShareAlike 3.0 Netherlands (CC BY-NC-SA-3.0).

The content is available under Creative Commons Attribution-NonCommercial-ShareAlike 3.0 (see also <http://creativecommons.org/licenses/by-nc-sa/3.0/nl/>)

This does not apply to information from third parties that sometimes is used and / or referred to in a Health and Care Information Model, for example to an international medical terminology system. Any (copyright) rights that protect this information are not owned by the cooperating parties but by those third parties.

Nictiz is the independent national competence centre for electronic exchange of health and care information. The activities of Nictiz include the targeted development and management of information standards at the request of and in partnership with the stakeholders in healthcare. Nictiz advises these parties on all aspects of information exchange and identifies (future) national and international developments.

**Nictiz**

P.O. Box 19121  
2500 CC Den Haag  
Oude Middenweg 55  
2491 AC Den Haag

070-3173450  
[info@nictiz.nl](mailto:info@nictiz.nl)  
[www.nictiz.nl](http://www.nictiz.nl)



