

# Health & Care Information Model:

nl.zorg.Signaling-v3.0

Status: Final

Release: 2026-1

Release status: Prepublished

Managed by:



# Content

<b>1. nl.zorg.Signaling-v3.0</b>	<b>3</b>
1.1 Revision History	3
1.2 Concept	3
1.3 Mindmap	3
1.4 Purpose	3
1.5 Patient Population	3
1.6 Evidence Base	4
1.7 Information Model	4
1.8 Example Instances	8
1.9 Instructions	9
1.10 Interpretation	9
1.11 Care Process	9
1.12 Example of the Instrument	9
1.13 Constraints	9
1.14 Issues	10
1.15 References	10
1.16 Functional Model	10
1.17 Traceability to other Standards	10
1.18 Disclaimer	10
1.19 Terms of Use	10
1.20 Copyrights	10

## 1. nl.zorg.Signaling-v3.0

DCM::CoderList	Projectgroep VIPP GGZ
DCM::ContactInformation.Address	*
DCM::ContactInformation.Name	*
DCM::ContactInformation.Telecom	*
DCM::ContentAuthorList	Projectgroep VIPP GGZ
DCM::CreationDate	30-3-2022
DCM::DeprecatedDate	
DCM::DescriptionLanguage	nl
DCM::EndorsingAuthority.Address	
DCM::EndorsingAuthority.Name	*
DCM::EndorsingAuthority.Telecom	
DCM::Id	2.16.840.1.113883.2.4.3.11.60.40.3.16.5
DCM::KeywordList	
DCM::LifecycleStatus	Final
DCM::ModelerList	Projectgroep VIPP GGZ
DCM::Name	nl.zorg.Signalering
DCM::PublicationDate	17-04-2026
DCM::PublicationStatus	Prepublished
DCM::ReviewerList	
DCM::RevisionDate	08-04-2025
DCM::Supersedes	nl.zorg.Signalering-v2.0
DCM::Version	3.0
HCIM::PublicationLanguage	EN

### 1.1 Revision History

Publicatieversie 1.0 (10-06-2022)

Bevat:

Publicatieversie 2.0 (15-10-2023)

Bevat: ZIB-1850.

Publicatieversie 3.0 (24-04-2024)

Bevat: ZIB-2621.

### 1.2 Concept

A signal is a (group of) observation(s) of symptoms or behavior that can be an aid in signaling a worsening of a certain condition.

### 1.3 Mindmap

### 1.4 Purpose

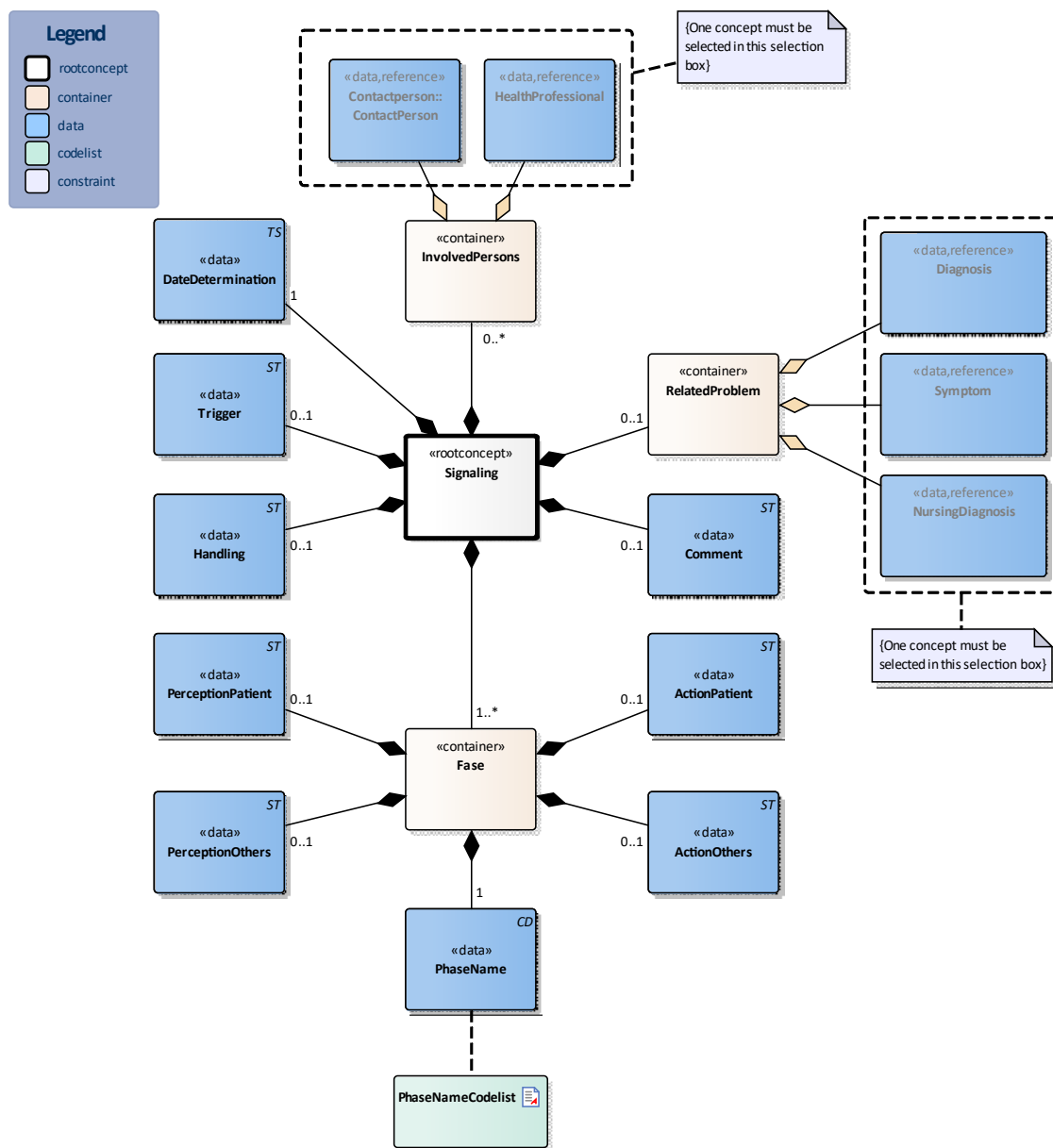
By recognizing and observing certain signals by the patient himself or his environment in time and taking the right actions, worse can be prevented.

By recording the patient-specific pattern in, for example, an identification plan, the patient himself and his environment also gain insight into the course of aggravation as well as a handle for patient-specific correct approach and interventions.

### 1.5 Patient Population

## 1.6 Evidence Base

## 1.7 Information Model



«rootconcept»	Signaling	
Definitie	Root concept of the Signaling information model.This root concept contains all data elements of the Signaling information model.	
Datatype		
DCM::ConceptId	NL-CM:16.5.1	
Opties		

«container»	InvolvedPersons	
Definitie	Container of the InvolvedPersons concept.This container contains all data elements of the InvolvedPersons concept.	
Datatype		
DCM::ConceptId	NL-CM:16.5.5	
DCM::DefinitionCode	SNOMED CT: 125676002 Person	
Opties		

«data»	Contactperson::ContactPerson	
Definitie	The patient's contactperson with whom the signals, perception and actions have been discussed and are known.	
Datatype		
DCM::ConceptId	NL-CM:16.5.6	
DCM::DefinitionCode	SNOMED CT: 70862002 Contact person	
DCM::ReferencedConceptId	NL-CM:3.1.1	This is a reference to the rootconcept of information model ContactPerson.
Opties		

«data»	HealthProfessional	
Definitie	The healthcare professional involved with the patient with whom the signals, perception and actions have been discussed and are known.</PRE>	
Datatype		
DCM::ConceptId	NL-CM:16.5.15	
DCM::DefinitionCode	SNOMED CT: 223366009 Healthcare professional	
DCM::ReferencedConceptId	NL-CM:17.1.1	This is a reference to the rootconcept of information model HealthProfessional.
Opties		

«container»	RelatedProblem	
Definitie	Container of the RelatedProblem concept.This container contains all data elements of the RelatedProblem concept.	
Datatype		
DCM::ConceptId	NL-CM:16.5.16	
Opties		

«data»	Diagnosis	
Definitie	The diagnosis related to the perception to which the signaling refers.	
Datatype		
DCM::ConceptId	NL-CM:16.5.17	
DCM::ReferencedConceptId	NL-CM:5.6.1	This is a reference to the rootconcept of information model Diagnosis.
Opties		

«data»	Symptom	
Definitie	The symptom related to the perception to which the signaling refers.	
Datatype		
DCM::ConceptId	NL-CM:16.5.18	
DCM::ReferencedConceptId	NL-CM:5.5.1	This is a reference to the rootconcept of information model Symptom.
Opties		

«data»	NursingDiagnosis	
Definitie	The nursing diagnosis related to the perception to which the signaling refers.	
Datatype		
DCM::ConceptId	NL-CM:16.5.19	
DCM::ReferencedConceptId	NL-CM:5.8.1	This is a reference to the rootconcept of information model NursingDiagnosis.
Opties		

«data»	DateDetermination	
Definitie	Date on which the Signaling Plan was measured.</PRE>	
Datatype	TS	
DCM::ConceptId	NL-CM:16.5.7	
Opties		

«data»	Trigger	
Definitie	A specific event or experience that activates the patient's behavior.	
Datatype	ST	
DCM::ConceptId	NL-CM:16.5.12	
DCM::DefinitionCode	SNOMED CT: 160951000146108 Trigger	
Opties		

«data»	Handling	
Definitie	Description of the desired handling of the patient in the event of a crisis.	
Datatype	ST	
DCM::ConceptId	NL-CM:16.5.4	
DCM::DefinitionCode	SNOMED CT: 180351000146109 Type of behavior and/or way of communication when approaching subject	
Opties		

«data»	Comment	
Definitie	A comment on the signaling.	
Datatype	ST	
DCM::ConceptId	NL-CM:16.5.11	
DCM::DefinitionCode	LOINC: 48767-8 Annotation comment [Interpretation] Narrative	
Opties		

«container»	Fase	
Definitie	Container of the Fase concept.This container contains all data elements of the Fase concept.	
Datatype		
DCM::ConceptId	NL-CM:16.5.8	
Opties		

«data»	PerceptionPatient	
Definitie	Description of behaviour, symptoms and/or thoughts that are characteristic of the particular phase that the patient observes in himself.	
Datatype	ST	

<b>DCM::ConceptId</b>	NL-CM:16.5.14	
<b>DCM::DefinitionCode</b>	SNOMED CT: 180321000146100 Self reported behavior	
<b>Opties</b>		

«data»	PerceptionOthers	
<b>Definitie</b>	A description of behavior and/or symptoms of the patient observed by others that are characteristic of a particular phase. The signs of aggravation on which certain actions can be taken by the patient and possibly his environment.	
<b>Datatype</b>	ST	
<b>DCM::ConceptId</b>	NL-CM:16.5.13	
<b>DCM::DefinitionCode</b>	SNOMED CT: 180331000146103 Behavior reported by social environment of subject	
<b>Opties</b>		

«data»	ActionPatient	
<b>Definitie</b>	A description of what the patient can do or perform to prevent aggravation or relapse.	
<b>Datatype</b>	ST	
<b>DCM::ConceptId</b>	NL-CM:16.5.3	
<b>DCM::DefinitionCode</b>	SNOMED CT: 180341000146106 Intervention by subject	
<b>Opties</b>		

«data»	ActionOthers	
<b>Definitie</b>	A description of actions or interventions in a patient's perception that others can perform to prevent its aggravation.van	
<b>Datatype</b>	ST	
<b>DCM::ConceptId</b>	NL-CM:16.5.2	
<b>DCM::DefinitionCode</b>	SNOMED CT: 385990006 Interventies door ondersteunend netwerk	
<b>Opties</b>		

«data»	PhaseName	
<b>Definitie</b>	The phase of signaling the condition to which the particular actions and observations relate.	
<b>Datatype</b>	CD	
<b>DCM::ConceptId</b>	NL-CM:16.5.9	
<b>DCM::DefinitionCode</b>	SNOMED CT: 180361000146107 Phase of mental health relapse prevention plan	
<b>DCM::ValueSet</b>	PhaseNameCodelist	OID: 2.16.840.1.113883.2.4.3.11.60.40.2.16.5.1
<b>Opties</b>		

«document»	PhaseNameCodelist	
<b>Definitie</b>		
<b>Datatype</b>		

DCM::ValueSetBinding	Extensible			
DCM::ValueSetId	2.16.840.1.113883.2.4.3.11.60.40.2.16.5.1			
DCM::ValueSetIncludeOTH	True			
DCM::ValueSetStatus	Active			
HCIM::ValueSetLanguage	--			
Opties				
FaseNaamCodelijst				OID: 2.16.840.1.113883.2.4.3.11.60.40.2.16.5.1
Concept Name	Concept Code	Coding Syst. Name	Coding System OID	Description
Fase 0 van signaleringsplan voor geestelijke gezondheid	180271000146105	SNOMED CT	2.16.840.1.113883.6.96	Groen
Fase 2 van signaleringsplan voor geestelijke gezondheid	180291000146109	SNOMED CT	2.16.840.1.113883.6.96	Oranje
Fase 3 van signaleringsplan voor geestelijke gezondheid	180301000146108	SNOMED CT	2.16.840.1.113883.6.96	Rood

	Legend
Definitie	
Datatype	
Opties	

	Constraint
Definitie	One concept must be selected in this selection box
Datatype	
Opties	

	Constraint
Definitie	One concept must be selected in this selection box
Datatype	
Opties	

## 1.8 Example Instances



Signalering	
DatumVaststelling	18-05-2021
Bejegening	Niet tegen me schreeuwen - me niet vastpakken
Toelichting	Ik heb een klein sociaal netwerk en ik zal niet snel zelf om hulp vragen
BetrokkenPersonen	
Contactpersoon	
Naam	G.J. Pieterse
Relatie	Echtgenoot
Zorgverlener	
ZorgverlenerRol	Hoofdbehandelaar
Naam	A.S. Janssen
GerelateerdProbleem	
Diagnose	Borderline persoonlijkheidsstoornis
Fase	
WaarnemingPatient	Ik voel me goed - ik ben vrolijk - ik heb muziek in mijn hoofd
WaarnemingAnderen	Ik fluit of neurie
ActiePatient	Ik besef me dat het goed met me gaat
ActieAnderen	Benoem wat je ziet en label dit positief
FaseNaam	Groen
Fase	
WaarnemingPatient	Ik ben prikkelbaar en snel op mijn teentjes getrapt
WaarnemingAnderen	Stemming is neerslachtig - ik wil mijn medicatie niet innemen
ActiePatient	Situaties vermijden waarin de muziek hard staat
ActieAnderen	Gesprek aangaan, bezorgdheid benoemen
FaseNaam	Oranje

## 1.9 Instructions

## 1.10 Interpretation

## 1.11 Care Process

## 1.12 Example of the Instrument

## 1.13 Constraints

## 1.14 Issues

## 1.15 References

## 1.16 Functional Model

## 1.17 Traceability to other Standards

## 1.18 Disclaimer

The Health and Care Information Models (a.k.a Clinical Building Block) has been made in collaboration with several different parties in healthcare. These parties asked Nictiz to manage good maintenance and development of the information models. Hereafter, these parties and Nictiz are referred to as the collaborating parties. The collaborating parties paid utmost attention to the reliability and topicality of the data in these Health and Care Information Models. Omissions and inaccuracies may however occur. The collaborating parties are not liable for any damages resulting from omissions or inaccuracies in the information provided, nor are they liable for damages resulting from problems caused by or inherent to distributing information on the internet, such as malfunctions, interruptions, errors or delays in information or services provide by the parties to you or by you to the parties via a website or via e-mail, or any other digital means. The collaborating parties will also not accept liability for any damages resulting from the use of data, advice or ideas provided by or on behalf of the parties by means of the Health and Care Information Models. The parties will not accept any liability for the content of information in this Health and Care Information Model to which or from which a hyperlink is referred. In the event of contradictions in mentioned Health and Care Information Model documents and files, the most recent and highest version of the listed order in the revisions will indicate the priority of the documents in question. If information included in the digital version of a Health and Care Information Model is also distributed in writing, the written version will be leading in case of textual differences. This will apply if both have the same version number and date. A definitive version has priority over a draft version. A revised version has priority over previous versions.

## 1.19 Terms of Use

The user may use the Health and Care Information Models without limitations. The copyright provisions in the paragraph concerned apply to copying, distributing and passing on the Health and Care Information Models.

## 1.20 Copyrights

A Health and Care Information Model qualifies as a work within the meaning of Section 10 of the Copyright Act (Auteurswet). Copyrights protect the Health and Care Information Models and these rights are owned by the cooperating parties.

The user may copy, distribute and pass on the information in this Health and Care Information Model under the conditions that apply for Creative Commons license Attribution-NonCommercial-ShareAlike 3.0 Netherlands (CC BY-NC-SA-3.0).

The content is available under Creative Commons Attribution-NonCommercial-ShareAlike 3.0 (see also <http://creativecommons.org/licenses/by-nc-sa/3.0/nl/>)

This does not apply to information from third parties that sometimes is used and / or referred to in a Health and Care Information Model, for example to an international medical terminology system. Any (copyright) rights that protect this information are not owned by the cooperating parties but by those third parties.

Nictiz is the independent national competence centre for electronic exchange of health and care information. The activities of Nictiz include the targeted development and management of information standards at the request of and in partnership with the stakeholders in healthcare. Nictiz advises these parties on all aspects of information exchange and identifies (future) national and international developments.

**Nictiz**

P.O. Box 19121  
2500 CC Den Haag  
Oude Middenweg 55  
2491 AC Den Haag

070-3173450  
[info@nictiz.nl](mailto:info@nictiz.nl)  
[www.nictiz.nl](http://www.nictiz.nl)



