

# Health & Care Information Model:

nl.zorg.part.TimeInterval-v1.3

Status: Final

Release: 2026-1

Release status: Prepublished

Managed by:



# Content

<b>1. nl.zorg.part.TimeInterval-v1.3</b>	<b>3</b>
1.1 Revision History	3
1.2 Concept	3
1.3 Mindmap	3
1.4 Purpose	3
1.5 Patient Population	4
1.6 Evidence Base	4
1.7 Information Model	4
1.8 Example Instances	5
1.9 Instructions	6
1.10 Interpretation	6
1.11 Care Process	6
1.12 Example of the Instrument	6
1.13 Constraints	6
1.14 Issues	6
1.15 References	6
1.16 Functional Model	6
1.17 Traceability to other Standards	6
1.18 Disclaimer	6
1.19 Terms of Use	7
1.20 Copyrights	7

## 1. nl.zorg.part.TimeInterval-v1.3

DCM::CoderList	Kerngroep Registratie aan de Bron
DCM::ContactInformation.Address	
DCM::ContactInformation.Name	
DCM::ContactInformation.Telecom	
DCM::ContentAuthorList	Kerngroep Registratie aan de Bron
DCM::CreationDate	17-8-2017
DCM::DeprecatedDate	
DCM::DescriptionLanguage	nl
DCM::EndorsingAuthority.Address	
DCM::EndorsingAuthority.Name	
DCM::EndorsingAuthority.Telecom	
DCM::Id	2.16.840.1.113883.2.4.3.11.60.40.3.20.3
DCM::KeywordList	
DCM::LifecycleStatus	Final
DCM::ModelerList	Kerngroep Registratie aan de Bron
DCM::Name	nl.zorg.part.TijdsInterval
DCM::PublicationDate	17-04-2026
DCM::PublicationStatus	Prepublished
DCM::ReviewerList	Kerngroep Registratie aan de Bron
DCM::RevisionDate	05-04-2024
DCM::Supersedes	nl.zorg.part.TijdsInterval-v1.2
DCM::Version	1.3
HCIM::PublicationLanguage	EN

### 1.1 Revision History

Publicatieversie 1.0 (04-09-2017)

Publicatieversie 1.1 (01-12-2021)  
Bevat: ZIB-1380, ZIB-1460.

Publicatieversie 1.1.1 (10-06-2022)  
Bevat: ZIB-1756.

Publicatieversie 1.2 (15-10-2023)  
Bevat: ZIB-1754, ZIB-1974.

Publicatieversie 1.3 (15-04-2024)  
Bevat: ZIB -2148.

### 1.2 Concept

A time interval indicates the time between two moments in time. An interval can be defined by a start time and end time, start time and duration, or duration and end time. For intervals in the future, start and/or end date may not be known and only duration is known. For "Until further notice" intervals, both the duration and the end date are unknown.  
This is a sub-building block.

### 1.3 Mindmap

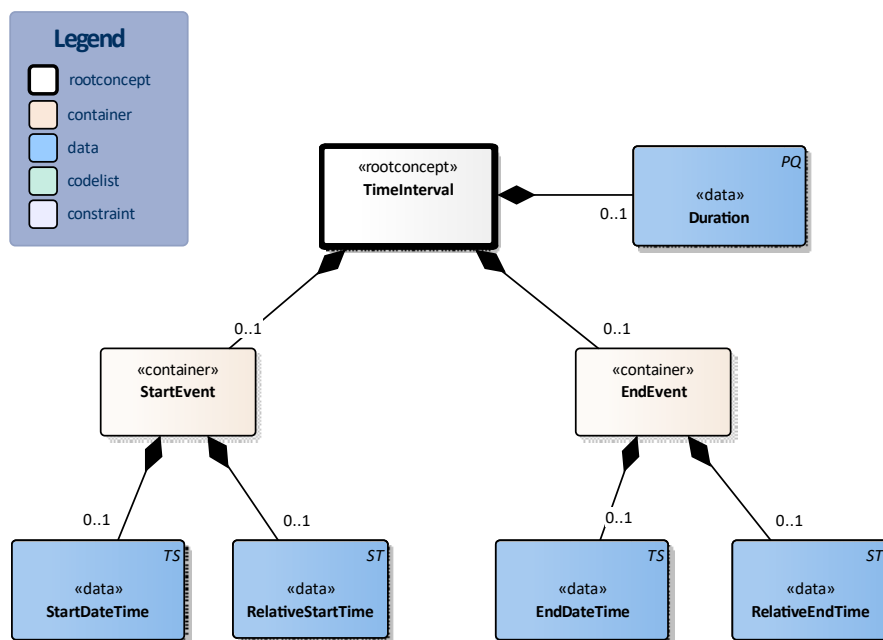
### 1.4 Purpose

The time interval is used to denote the period of time over which the corresponding event took place or should take place.

## 1.5 Patient Population

## 1.6 Evidence Base

## 1.7 Information Model



«rootconcept»	TimeInterval
Definitie	Root concept of the TimeInterval partial information model. This root concept contains all data elements of the TimeInterval partial information model.
Datatype	
DCM::ConceptId	NL-CM:20.3.1
Opties	

«data»	Duration
Definitie	The duration of the interval in appropriate units of time ( <i>e.g.</i> days or hours, etc.).
Datatype	PQ
DCM::ConceptId	NL-CM:20.3.4
Opties	

«container»	StartEvent
Definitie	Container of the StartEvent concept. This container contains all data elements of the StartEvent concept.
Datatype	
DCM::ConceptId	NL-CM:20.3.5

<b>Opties</b>	
---------------	--

<b>«data»</b>	<b>StartDateTime</b>	
<b>Definitie</b>	The start date and time of the interval.	
<b>Datatype</b>	TS	
<b>DCM::ConceptId</b>	NL-CM:20.3.2	
<b>Opties</b>		

<b>«data»</b>	<b>RelativeStartTime</b>	
<b>Definitie</b>	Textual representation of a start time associated with an event for which the time is not fixed or known. For example "Start the day after discharge from hospital"	
<b>Datatype</b>	ST	
<b>DCM::ConceptId</b>	NL-CM:20.3.7	
<b>Opties</b>		

<b>«container»</b>	<b>EndEvent</b>	
<b>Definitie</b>	Container of the EndEvent concept. This container contains all data elements of the EndEvent concept.	
<b>Datatype</b>		
<b>DCM::ConceptId</b>	NL-CM:20.3.6	
<b>Opties</b>		

<b>«data»</b>	<b>RelativeEndTime</b>	
<b>Definitie</b>	Textual representation of an end time associated with an event for which the timing is not yet fixed. For example "Stop the day before operation".	
<b>Datatype</b>	ST	
<b>DCM::ConceptId</b>	NL-CM:20.3.8	
<b>Opties</b>		

<b>«data»</b>	<b>EndDateTime</b>	
<b>Definitie</b>	The end date and time of the interval.	
<b>Datatype</b>	TS	
<b>DCM::ConceptId</b>	NL-CM:20.3.3	
<b>Opties</b>		

	<b>Legend</b>	
<b>Definitie</b>		
<b>Datatype</b>		
<b>Opties</b>		

## 1.8 Example Instances

TijdsInterval	
Start DatumTijd	20-08-2017 12:00
Eind DatumTijd	30-08-2017 24:00
Duur	

TijdsInterval	
Start DatumTijd	20-08-2017
Eind DatumTijd	
Duur	16 dagen

## 1.9 Instructions

### 1.10 Interpretation

### 1.11 Care Process

### 1.12 Example of the Instrument

### 1.13 Constraints

### 1.14 Issues

### 1.15 References

### 1.16 Functional Model

### 1.17 Traceability to other Standards

### 1.18 Disclaimer

The Health and Care Information Models (a.k.a Clinical Building Block) has been made in collaboration with several different parties in healthcare. These parties asked Nictiz to manage good maintenance and development of the information models. Hereafter, these parties and Nictiz are referred to as the collaborating parties. The collaborating parties paid utmost attention to the reliability and topicality of the data in these Health and Care Information Models. Omissions and inaccuracies may however occur. The collaborating parties are not liable for any damages resulting from omissions or inaccuracies in the

information provided, nor are they liable for damages resulting from problems caused by or inherent to distributing information on the internet, such as malfunctions, interruptions, errors or delays in information or services provided by the parties to you or by you to the parties via a website or via e-mail, or any other digital means. The collaborating parties will also not accept liability for any damages resulting from the use of data, advice or ideas provided by or on behalf of the parties by means of the Health and Care Information Models. The parties will not accept any liability for the content of information in this Health and Care Information Model to which or from which a hyperlink is referred. In the event of contradictions in mentioned Health and Care Information Model documents and files, the most recent and highest version of the listed order in the revisions will indicate the priority of the documents in question. If information included in the digital version of a Health and Care Information Model is also distributed in writing, the written version will be leading in case of textual differences. This will apply if both have the same version number and date. A definitive version has priority over a draft version. A revised version has priority over previous versions.

## **1.19 Terms of Use**

The user may use the Health and Care Information Models without limitations. The copyright provisions in the paragraph concerned apply to copying, distributing and passing on the Health and Care Information Models.

## **1.20 Copyrights**

A Health and Care Information Model qualifies as a work within the meaning of Section 10 of the Copyright Act (Auteurswet). Copyrights protect the Health and Care Information Models and these rights are owned by the cooperating parties.

The user may copy, distribute and pass on the information in this Health and Care Information Model under the conditions that apply for Creative Commons license Attribution-NonCommercial-ShareAlike 3.0 Netherlands (CC BY-NC-SA-3.0).

The content is available under Creative Commons Attribution-NonCommercial-ShareAlike 3.0 (see also <http://creativecommons.org/licenses/by-nc-sa/3.0/nl/>)

This does not apply to information from third parties that sometimes is used and / or referred to in a Health and Care Information Model, for example to an international medical terminology system. Any (copyright) rights that protect this information are not owned by the cooperating parties but by those third parties.

Nictiz is the independent national competence centre for electronic exchange of health and care information. The activities of Nictiz include the targeted development and management of information standards at the request of and in partnership with the stakeholders in healthcare. Nictiz advises these parties on all aspects of information exchange and identifies (future) national and international developments.

**Nictiz**

P.O. Box 19121  
2500 CC Den Haag  
Oude Middenweg 55  
2491 AC Den Haag

070-3173450  
[info@nictiz.nl](mailto:info@nictiz.nl)  
[www.nictiz.nl](http://www.nictiz.nl)





