

Health & Care Information Model:

nl.zorg.CareTeam-v1.0.1

Status: Final

Release status: Prepublished

Content

1. nl.zorg.CareTeam-v1.0.1	3
1.1 Revision History	3
1.2 Concept	3
1.3 Mindmap	3
1.4 Purpose	3
1.5 Patient Population	3
1.6 Evidence Base	3
1.7 Information Model	4
1.8 Example Instances	6
1.9 Instructions	6
1.10 Interpretation	6
1.11 Care Process	6
1.12 Example of the Instrument	6
1.13 Constraints	6
1.14 Issues	6
1.15 References	7
1.16 Functional Model	7
1.17 Traceability to other Standards	7
1.18 Disclaimer	7
1.19 Terms of Use	7
1.20 Copyrights	7

1. nl.zorg.CareTeam-v1.0.1

DCM::CoderList	*
DCM::ContactInformation.Address	*
DCM::ContactInformation.Name	*
DCM::ContactInformation.Telecom	*
DCM::ContentAuthorList	*
DCM::CreationDate	16-03-2020
DCM::DeprecatedDate	
DCM::DescriptionLanguage	nl
DCM::EndorsingAuthority.Address	
DCM::EndorsingAuthority.Name	*
DCM::EndorsingAuthority.Telecom	
DCM::Id	2.16.840.1.113883.2.4.3.11.60.40.3.17.3
DCM::KeywordList	
DCM::LifecycleStatus	Final
DCM::ModelerList	*
DCM::Name	nl.zorg.ZorgTeam
DCM::PublicationDate	15-10-2023
DCM::PublicationStatus	Prepublished
DCM::ReviewerList	
DCM::RevisionDate	03-08-2021
DCM::Supersedes	nl.zorg.ZorgTeam-v1.0
DCM::Version	1.0.1
HCIM::PublicationLanguage	EN

1.1 Revision History

Publicatieversie 1.0 (01-09-2020)

Publicatieversie 1.0.1 (01-12-2021)

Bevat: ZIB-1282, ZIB-1578.

1.2 Concept

A care team is a group of health professionals and other people involved in caring for a patient for one or more problems.

1.3 Mindmap

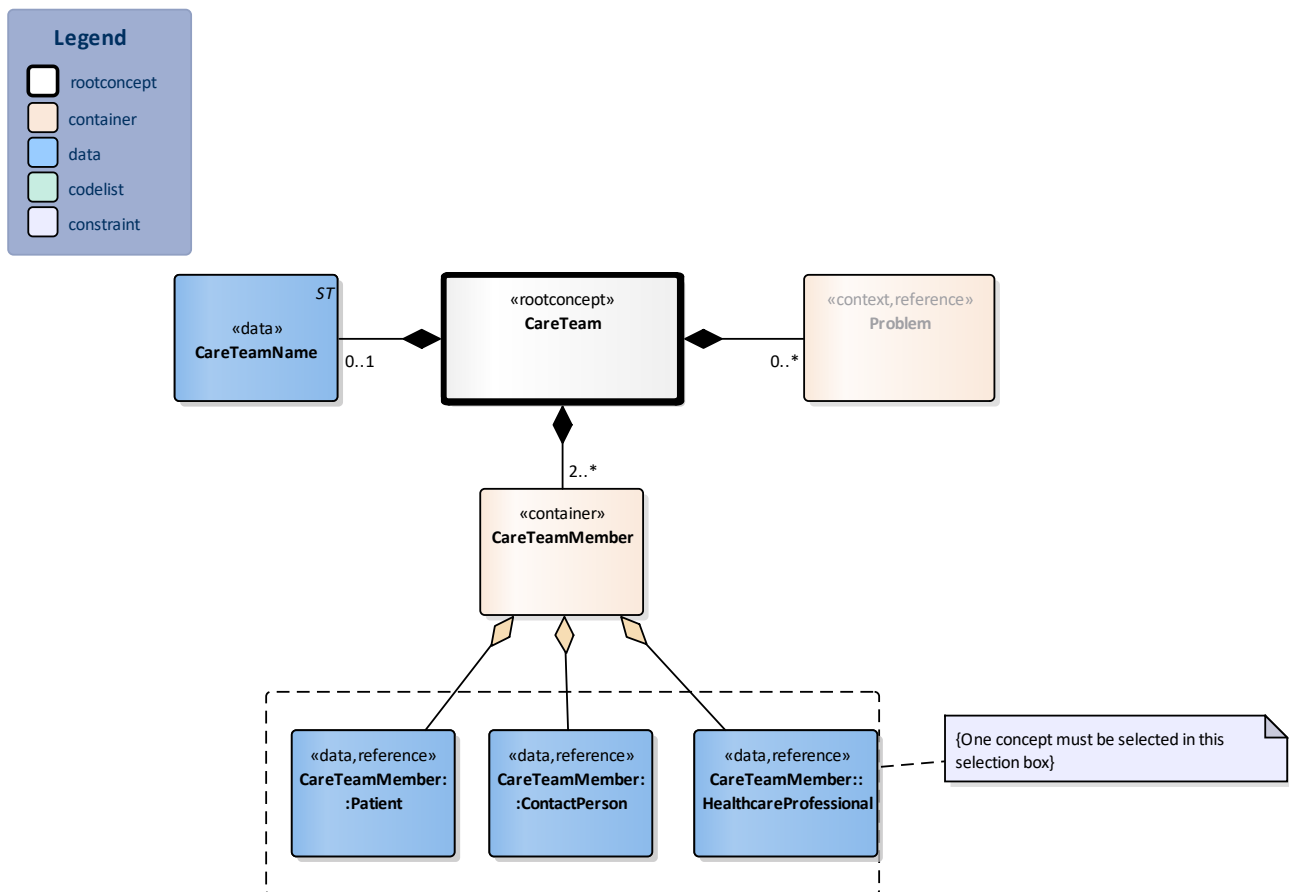
1.4 Purpose

Knowing who is a member of a care team is important to ensure optimal patient care. It contributes to the continuity, consistency, efficiency and quality of care. This applies both within an institution and in integrated care where several care providers are involved.

1.5 Patient Population

1.6 Evidence Base

1.7 Information Model



«rootconcept»	CareTeam	
Definitie	Root concept of the CareTeam information model.This root concept contains all data elements of the CareTeam information model.	
Datatype		
DCM::ConceptId	NL-CM:17.3.1	
DCM::DefinitionCode	SNOMED CT: 401322007	
	Under care of team	
Opties		

«data»	CareTeamName	
Definitie	The name of the care team.	
Datatype	ST	
DCM::ConceptId	NL-CM:17.3.12	
DCM::DefinitionCode	SNOMED CT: 703503000	
	Name	
DCM::ExampleValue	Geboortezorg team	
	Rotterdam Centrum	
Opties		

«context»	Problem	
Definitie	The disease and/or the health status for which the patient receives treatment via members of the care team.	
Datatype		
DCM::ConceptId	NL-CM:17.3.5	
DCM::DefinitionCode	SNOMED CT: 55607006	
	Problem	
DCM::ExampleValue	cheilo-gnatho-schisis	

DCM::ReferencedConceptId	NL-CM:5.1.1	This is a reference to the rootconcept of information model Problem.
Opties		

«container»	CareTeamMember	
Definitie	Container of the CareTeamMember concept.This container contains all data elements of the CareTeamMember concept.	
Datatype		
DCM::ConceptId	NL-CM:17.3.4	
DCM::DefinitionCode	SNOMED CT: 125676002 Person	
Opties		

«data»	CareTeamMember::ContactPerson	
Definitie	A contact person of the patient as member of the care team.	
Datatype		
DCM::ConceptId	NL-CM:17.3.8	
DCM::DefinitionCode	SNOMED CT: 70862002 Contact person	
DCM::ReferencedConceptId	NL-CM:3.1.1	This is a reference to the rootconcept of information model ContactPerson.
Opties		

«data»	CareTeamMember::Patient	
Definitie	The patient as member of the care team.	
Datatype		
DCM::ConceptId	NL-CM:17.3.7	
DCM::DefinitionCode	SNOMED CT: 116154003 Patient	
DCM::ReferencedConceptId	NL-CM:0.1.1	This is a reference to the rootconcept of information model Patient.
Opties		

«data»	CareTeamMember::HealthcareProfessional	
Definitie	A health professional as a member of the care team involved in the care around the patient.	
Datatype		
DCM::ConceptId	NL-CM:17.3.9	
DCM::DefinitionCode	SNOMED CT: 223366009 Healthcare professional	
DCM::ReferencedConceptId	NL-CM:17.1.1	This is a reference to the rootconcept of information model HealthProfessional.
Opties		

	Legend	
Definitie		
Datatype		
Opties		

	Constraint	
Definitie	One concept must be selected in this selection box	
Datatype		
Opties		

1.8 Example Instances

ZorgTeam			
ZorgTeamNaam			
Complexe Ouderenzorg			
ZorgTeamLid			
ZorgverlenerNaam	Specialisme	Zorgaanbieder	Rol
Drs. W. Klaasen	Huisartsen, niet nader gespecificeerd	Gezondheidscentrum Rotterdam Noord	Casemanager
Dr. S. Curie	Medisch specialisten, geriatrie	Parnassia Groep Rotterdam	Behandelaar
Dr. R.M. van Heck	Medisch specialisten, cardiologie	Erasmus MC	Behandelaar
Dr. A. Schele	Medisch specialisten, inwendige geneeskunde	Franciscus Gasthuis & Vlietland	Behandelaar
Drs. G.F. de Haan	Apothekers	Apotheek Bergweg	Consulent
K. van der Linden		Humanitas Thuiszorg	vrijwilliger
Probleem			
ProbleemNaam	ProbleemType	Toelichting	
Vasculaire dementie	Diagnose	De laatste weken erg onrustig in de nacht	
Hartfalen	Diagnose	Houdt veel vocht vast, kortademig	
Geneesmiddel-interacties	Complicatie	Huiduitslag met veel jeuk door medicatie	

1.9 Instructions

1.10 Interpretation

1.11 Care Process

1.12 Example of the Instrument

1.13 Constraints

1.14 Issues

1.15 References

1.16 Functional Model

1.17 Traceability to other Standards

1.18 Disclaimer

The Health and Care Information Models (a.k.a Clinical Building Block) has been made in collaboration with several different parties in healthcare. These parties asked Nictiz to manage good maintenance and development of the information models. Hereafter, these parties and Nictiz are referred to as the collaborating parties. The collaborating parties paid utmost attention to the reliability and topicality of the data in these Health and Care Information Models. Omissions and inaccuracies may however occur. The collaborating parties are not liable for any damages resulting from omissions or inaccuracies in the information provided, nor are they liable for damages resulting from problems caused by or inherent to distributing information on the internet, such as malfunctions, interruptions, errors or delays in information or services provide by the parties to you or by you to the parties via a website or via e-mail, or any other digital means. The collaborating parties will also not accept liability for any damages resulting from the use of data, advice or ideas provided by or on behalf of the parties by means of the Health and Care Information Models. The parties will not accept any liability for the content of information in this Health and Care Information Model to which or from which a hyperlink is referred. In the event of contradictions in mentioned Health and Care Information Model documents and files, the most recent and highest version of the listed order in the revisions will indicate the priority of the documents in question. If information included in the digital version of a Health and Care Information Model is also distributed in writing, the written version will be leading in case of textual differences. This will apply if both have the same version number and date. A definitive version has priority over a draft version. A revised version has priority over previous versions.

1.19 Terms of Use

The user may use the Health and Care Information Models without limitations. The copyright provisions in the paragraph concerned apply to copying, distributing and passing on the Health and Care Information Models.

1.20 Copyrights

A Health and Care Information Model qualifies as a work within the meaning of Section 10 of the Copyright Act (Auteurswet). Copyrights protect the Health and Care Information Models and these rights are owned by the cooperating parties.

The user may copy, distribute and pass on the information in this Health and Care Information Model under the conditions that apply for Creative Commons license Attribution-NonCommercial-ShareAlike 3.0 Netherlands (CC BY-NC-SA-3.0).

The content is available under Creative Commons Attribution-NonCommercial-ShareAlike 3.0 (see also <http://creativecommons.org/licenses/by-nc-sa/3.0/nl/>)

This does not apply to information from third parties that sometimes is used and / or referred to in a Health and Care Information Model, for example to an international medical terminology system. Any (copyright) rights that protect this information are not owned by the cooperating parties but by those third parties.