

# **Health & Care Information Model:**

## **nl.zorg.FamilySituationChild-v1.4**

Status: Final

Release status: Prepublished

# Content

<b>1. nl.zorg.FamilySituationChild-v1.4 .....</b>	<b>3</b>
1.1 Revision History .....	3
1.2 Concept .....	3
1.3 Mindmap .....	3
1.4 Purpose .....	4
1.5 Patient Population .....	4
1.6 Evidence Base .....	4
1.7 Information Model .....	4
1.8 Example Instances .....	7
1.9 Instructions .....	8
1.10 Interpretation .....	8
1.11 Care Process .....	8
1.12 Example of the Instrument .....	8
1.13 Constraints .....	8
1.14 Issues .....	9
1.15 References .....	9
1.16 Functional Model .....	9
1.17 Traceability to other Standards .....	9
1.18 Disclaimer .....	9
1.19 Terms of Use .....	9
1.20 Copyrights .....	9

# 1. nl.zorg.FamilySituationChild-v1.4

DCM::CoderList	Werkgroep RadB Verpleegkundige Gegevens
DCM::ContactInformation.Address	*
DCM::ContactInformation.Name	*
DCM::ContactInformation.Telecom	*
DCM::ContentAuthorList	Werkgroep RadB Verpleegkundige Gegevens
DCM::CreationDate	2-5-2014
DCM::DeprecatedDate	
DCM::DescriptionLanguage	nl
DCM::EndorsingAuthority.Address	
DCM::EndorsingAuthority.Name	PM
DCM::EndorsingAuthority.Telecom	
DCM::Id	2.16.840.1.113883.2.4.3.11.60.40.3.7.16
DCM::KeywordList	Gezinssamenstelling, gezinssituatie, verzorgers
DCM::LifecycleStatus	Final
DCM::ModelerList	Werkgroep RadB Verpleegkundige Gegevens
DCM::Name	nl.zorg.GezinssituatieKind
DCM::PublicationDate	15-10-2023
DCM::PublicationStatus	Prepublished
DCM::ReviewerList	Projectgroep RadB Verpleegkundige Gegevens & Kerngroep Registratie aan de Bron
DCM::RevisionDate	11-09-2023
DCM::Supersedes	nl.zorg.GezinssituatieKind-v1.3
DCM::Version	1.4
HCIM::PublicationLanguage	EN

## 1.1 Revision History

Publicatieversie 1.0 (04-09-2017)

Publicatieversie 1.1 (31-12-2017)  
Bevat: ZIB-646.

Publicatieversie 1.2 (26-02-2019)  
Bevat: ZIB-697.

Publicatieversie 1.3 (01-12-2021)  
Bevat: ZIB-1572.

Publicatieversie 1.4 (15-10-2023)  
Bevat: ZIB-1983.

## 1.2 Concept

Traditionally, a family is defined as a group of people of one or more adults who carry responsibility for caring for and raising one or more children.

Children can have multiple family situations when they live partly with their father and partly with their mother *e.g.* after a divorce.

Currently, the term is used more broadly for all forms of cohabitation which form a recognizable social unit, of people who are or who are not related and who have long-lasting, affective bonds and provide each other with support and care.

## 1.3 Mindmap

## 1.4 Purpose

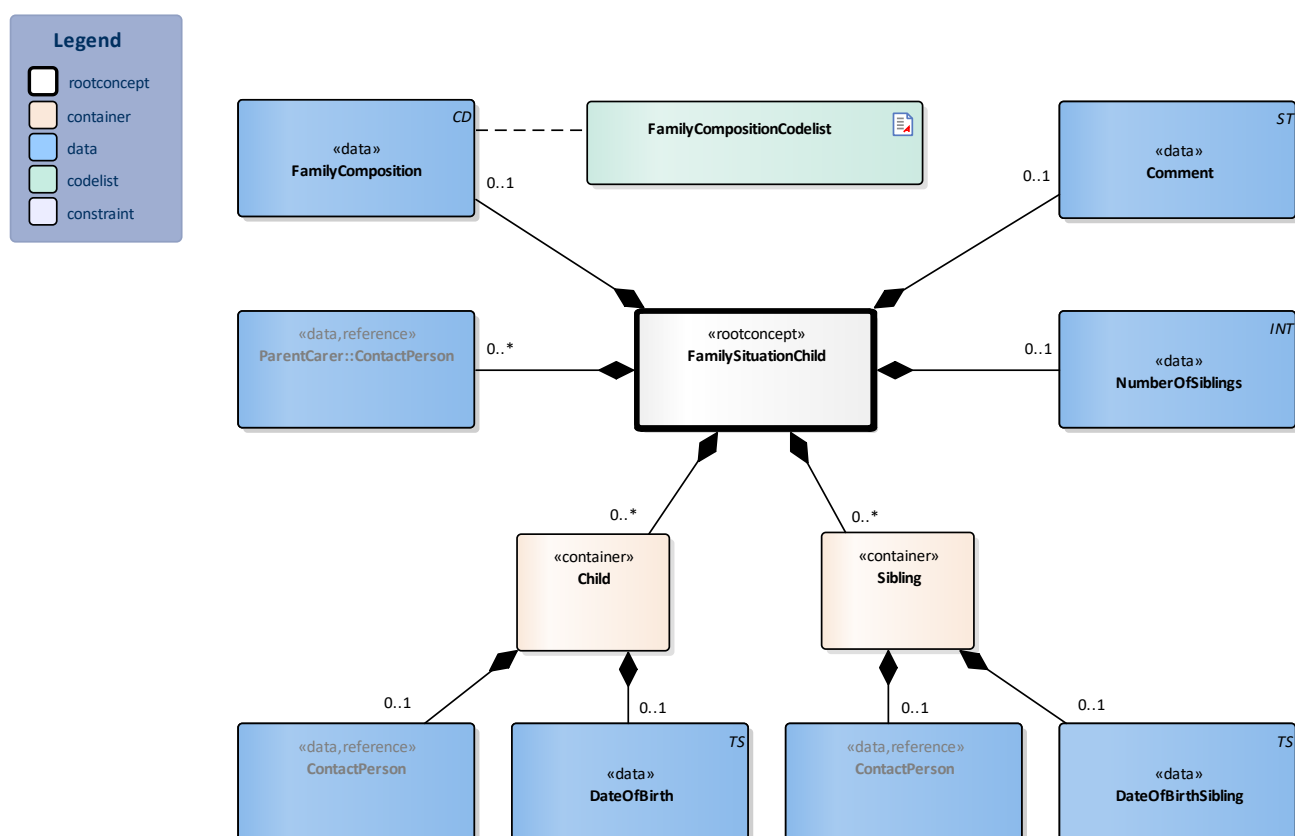
Information on the child's family situation is important in determining the extent to which the child and its family need care and support.

## 1.5 Patient Population

The information model is meant for describing the family situation of children aged 0 to 18 years.

## 1.6 Evidence Base

## 1.7 Information Model



«rootconcept»	FamilySituationChild	
Definitie	Root concept of the FamilySituationChild information model. This concept contains all data elements of the FamilySituationChild information model.	
Datatype		
DCM::ConceptId	NL-CM:7.16.1	
DCM::DefinitionCode	SNOMED CT:55801000146105 Finding of family details and household composition of child	
Opties		

«data»	FamilyComposition	
Definitie	The family composition describes the child's home situation and the form of cohabitation. A family can consist of one or more people.	

<b>Datatype</b>	CD	
<b>DCM::ConceptId</b>	NL-CM:7.16.2	
<b>DCM::DefinitionCode</b>	SNOMED CT:365481000 Finding of household composition	
<b>DCM::ValueSet</b>	FamilyCompositionCodelist	OID: 2.16.840.1.113883.2.4.3.11.60.40.2.7.16.1
<b>Opties</b>		

<b>«data»</b>	<b>ParentCarer::ContactPerson</b>	
<b>Definitie</b>	Person who has taken on the role of the child's caregiver in the family situation involved. This could be a parent or other family member.	
<b>Datatype</b>		
<b>DCM::ConceptId</b>	NL-CM:7.16.3	
<b>DCM::DefinitionCode</b>	SNOMED CT: 133932002 Caregiver	
<b>DCM::ReferencedConceptId</b>	NL-CM:3.1.1	This is a reference to the rootconcept of information model Contactperson.
<b>Opties</b>		

<b>«container»</b>	<b>Child</b>	
<b>Definitie</b>	Container of the Child concept. This container contains all data elements of the Child concept.	
<b>Datatype</b>		
<b>DCM::ConceptId</b>	NL-CM:7.16.4	
<b>DCM::DefinitionCode</b>	SNOMED CT: 67822003 Child	
<b>Opties</b>		

<b>«data»</b>	<b>ContactPerson</b>	
<b>Definitie</b>	Child of the child receiving care	
<b>Datatype</b>		
<b>DCM::ConceptId</b>	NL-CM:7.16.5	
<b>DCM::ReferencedConceptId</b>	NL-CM:3.1.1	This is a reference to the rootconcept of information model Contactperson.
<b>Opties</b>		

<b>«data»</b>	<b>DateOfBirth</b>	
<b>Definitie</b>	The child's date of birth.	
<b>Datatype</b>	TS	
<b>DCM::ConceptId</b>	NL-CM:7.16.6	
<b>DCM::DefinitionCode</b>	LOINC: 21112-8 Birth date	
<b>DCM::ExampleValue</b>	12-10-1985	
<b>Opties</b>		

<b>«data»</b>	<b>NumberOfSiblings</b>	
<b>Definitie</b>	Number of brothers and sisters of the child, living at the same house. Children in this context can be biological and adopted children, stepchildren and foster children.	
<b>Datatype</b>	INT	
<b>DCM::ConceptId</b>	NL-CM:7.16.7	
<b>DCM::DefinitionCode</b>	SNOMED CT:224095004 Number of siblings	
<b>Opties</b>		

<b>«container»</b>	<b>Sibling</b>	
--------------------	----------------	--

<b>Definitie</b>	Container of the Sibling concept. This container contains all data elements of the Sibling concept.	
<b>Datatype</b>		
<b>DCM::ConceptId</b>	NL-CM:7.16.8	
<b>Opties</b>		

<b>«data»</b>	<b>ContactPerson</b>	
<b>Definitie</b>	Sister or brother, which is also part of concerning household. This includes not only biological siblings, but also half, step, foster and adoptive siblings	
<b>Datatype</b>		
<b>DCM::ConceptId</b>	NL-CM:7.16.9	
<b>DCM::DefinitionCode</b>	SNOMED CT:375005 Sibling	
<b>DCM::ReferencedConceptId</b>	NL-CM:3.1.1	This is a reference to the rootconcept of information model Contactperson.
<b>Opties</b>		

<b>«data»</b>	<b>DateOfBirthSibling</b>	
<b>Definitie</b>	Date of birth of the sister or brother.	
<b>Datatype</b>	TS	
<b>DCM::ConceptId</b>	NL-CM:7.16.10	
<b>DCM::DefinitionCode</b>	LOINC: 21112-8 Birth date	
<b>Opties</b>		

<b>«data»</b>	<b>Comment</b>	
<b>Definitie</b>	A comment on the childs family situation.	
<b>Datatype</b>	ST	
<b>DCM::ConceptId</b>	NL-CM:7.16.11	
<b>DCM::DefinitionCode</b>	LOINC: 48767-8 Annotation comment	
<b>Opties</b>		

<b>«document»</b>	<b>FamilyCompositionCodelist</b>		
<b>Definitie</b>			
<b>Datatype</b>			
<b>DCM::ValueSetBinding</b>	Extensible		
<b>DCM::ValueSetId</b>	2.16.840.1.113883.2.4.3.11.60.40.2.7.16.1		
<b>HCIM::ValueSetLanguage</b>	--		
<b>Opties</b>			

GezinssamenstellingKindCodelijst			OID: 2.16.840.1.113883.2.4.3.11.60.40.2.7.16.1	
Concept Name	Concept Code	Coding Syst. Name	Coding System OID	Description
Lives with mother	224139006	SNOMED CT	2.16.840.1.113883.6.96	Woont bij moeder
Lives with father	224140008	SNOMED CT	2.16.840.1.113883.6.96	Woont bij vader
Lives with grandparents	224141007	SNOMED CT	2.16.840.1.113883.6.96	Woont bij grootouders
Lives with parents	224137008	SNOMED CT	2.16.840.1.113883.6.96	Woont bij ouders
Lives with foster parents	32331000146101	SNOMED CT	2.16.840.1.113883.6.96	Woont bij pleegouders
Lives with family	224133007	SNOMED CT	2.16.840.1.113883.6.96	Woont met gezin
Lives in supported home	224220007	SNOMED CT	2.16.840.1.113883.6.96	Woont in gezinsvervangend tehuis
Living in institution for disabled care	29221000146100	SNOMED CT	2.16.840.1.113883.6.96	Woont in instelling voor gehandicaptenzorg

Living in institution for mental health care	29231000146103	SNOMED CT	2.16.840.1.113883.6.96	Woont in instelling voor geestelijke gezondheidszorg
Lives in a children's home	160738002	SNOMED CT	2.16.840.1.113883.6.96	Woont in kindertehuis
Lives in boarding school	307106009	SNOMED CT	2.16.840.1.113883.6.96	Woont in internaat
Other	OTH	NullFlavor	2.16.840.1.113883.5.1008	Anders

	Legend
Definitie	
Datatype	
Opties	

## 1.8 Example Instances

GezinssituatieKind	
Gezinssamenstelling	Woont bij moeder
AantalBroersEnZussen	2
Ouder/Verzorger (Contactpersoon)	
Relatie	Moeder
Naamgegevens	
Geslachtsnaam	Smith
Voor naam	Carola
Contactgegevens	
EmailAdressen	
EmailAdres	smithcmm@xmail.com
EmailSoort	Privé e-mailadres
Ouder/Verzorger (Contactpersoon)	
Relatie	Stiefvader
Naamgegevens	
Geslachtsnaam	Vix
Voor naam	Peter
BroersEnZussen	
GeboortedatumZusBroer	02-02-2013
ZusOfBroer (ContactPersoon)	
Relatie	Broer
Naamgegevens	
Roepnaam	Javier
BroersEnZussen	
GeboortedatumZusBroer	20-12-2009
ZusOfBroer (ContactPersoon)	
Relatie	Stiefzus
Naamgegevens	
Roepnaam	Janine
Kinderen	
-	
Toelichting	-

## **1.9 Instructions**

If the child has multiple family situations, *e.g.* as a result of a divorce or due to part-time residence in an institution, information about these situations can be provided by multiple use of the information model. By indicating if the mother or father is involved in the described context, it becomes clear with whom the child lives in that situation.

## **1.10 Interpretation**

## **1.11 Care Process**

## **1.12 Example of the Instrument**

## **1.13 Constraints**

## **1.14 Issues**

## **1.15 References**

## **1.16 Functional Model**

## **1.17 Traceability to other Standards**

## **1.18 Disclaimer**

The Health and Care Information Models (a.k.a Clinical Building Block) has been made in collaboration with several different parties in healthcare. These parties asked Nictiz to manage good maintenance and development of the information models. Hereafter, these parties and Nictiz are referred to as the collaborating parties. The collaborating parties paid utmost attention to the reliability and topicality of the data in these Health and Care Information Models. Omissions and inaccuracies may however occur. The collaborating parties are not liable for any damages resulting from omissions or inaccuracies in the information provided, nor are they liable for damages resulting from problems caused by or inherent to distributing information on the internet, such as malfunctions, interruptions, errors or delays in information or services provide by the parties to you or by you to the parties via a website or via e-mail, or any other digital means. The collaborating parties will also not accept liability for any damages resulting from the use of data, advice or ideas provided by or on behalf of the parties by means of the Health and Care Information Models. The parties will not accept any liability for the content of information in this Health and Care Information Model to which or from which a hyperlink is referred. In the event of contradictions in mentioned Health and Care Information Model documents and files, the most recent and highest version of the listed order in the revisions will indicate the priority of the documents in question. If information included in the digital version of a Health and Care Information Model is also distributed in writing, the written version will be leading in case of textual differences. This will apply if both have the same version number and date. A definitive version has priority over a draft version. A revised version has priority over previous versions.



## 1.19 Terms of Use

The user may use the Health and Care Information Models without limitations. The copyright provisions in the paragraph concerned apply to copying, distributing and passing on the Health and Care Information Models.

## 1.20 Copyrights

A Health and Care Information Model qualifies as a work within the meaning of Section 10 of the Copyright Act (Auteurswet). Copyrights protect the Health and Care Information Models and these rights are owned by the cooperating parties.

The user may copy, distribute and pass on the information in this Health and Care Information Model under the conditions that apply for Creative Commons license Attribution-NonCommercial-ShareAlike 3.0 Netherlands (CC BY-NC-SA-3.0).

The content is available under Creative Commons Attribution-NonCommercial-ShareAlike 3.0 (see also <http://creativecommons.org/licenses/by-nc-sa/3.0/nl/>)

This does not apply to information from third parties that sometimes is used and / or referred to in a Health and Care Information Model, for example to an international medical terminology system. Any (copyright) rights that protect this information are not owned by the cooperating parties but by those third parties.